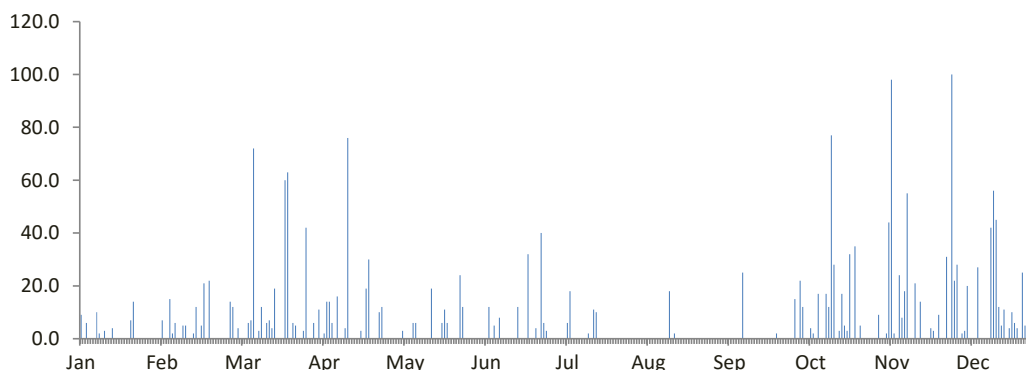


DATA CURAH HUJAN HARIAN

Nama Pos	: Greneng	Provinsi	: Jawa Tengah
Nomor Pos	: 4B	Kota/Kabupaten	: Blora
Jenis Alat	: Manual	Kecamatan	: Banyurejo
Koordinat	: 7 5' 42" LS-111 21' 2" BT	Desa/Kampung	: Greneng
Elevasi	: -	Pengelola	: BPSDA Seluna
SWS - DAS	: Lusi	Didirikan	: -
Tahun Pendirian	: -	Tahun	: 2022

TANGGAL	BULAN (mm)											
	Jan	Feb	Mar	Apr	Mei	Jun	Jul	Ags	Sep	Okt	Nov	Des
1	9.0	7.0	0.0	0.0	0.0	0.0	0.0	0.0	0.0	15.0	0.0	22.0
2	0.0	0.0	4.0	11.0	0.0	0.0	0.0	0.0	0.0	0.0	9.0	28.0
3	6.0	0.0	0.0	0.0	0.0	0.0	0.0	0.0	0.0	22.0	0.0	0.0
4	0.0	15.0	0.0	2.0	3.0	0.0	0.0	0.0	0.0	12.0	0.0	2.0
5	0.0	2.0	0.0	14.0	0.0	0.0	0.0	0.0	0.0	0.0	2.0	3.0
6	0.0	6.0	6.0	14.0	0.0	12.0	6.0	0.0	0.0	0.0	44.0	20.0
7	10.0	0.0	7.0	6.0	0.0	0.0	18.0	0.0	0.0	4.0	98.0	0.0
8	2.0	0.0	72.0	0.0	6.0	5.0	0.0	0.0	0.0	2.0	2.0	0.0
9	0.0	5.0	0.0	16.0	6.0	0.0	0.0	0.0	0.0	0.0	0.0	0.0
10	3.0	5.0	3.0	0.0	0.0	8.0	0.0	0.0	0.0	17.0	24.0	27.0
11	0.0	0.0	12.0	0.0	0.0	0.0	0.0	0.0	25.0	0.0	8.0	0.0
12	0.0	0.0	0.0	4.0	0.0	0.0	0.0	0.0	0.0	0.0	18.0	0.0
13	4.0	2.0	6.0	76.0	0.0	0.0	0.0	0.0	0.0	17.0	55.0	0.0
14	0.0	12.0	7.0	0.0	0.0	0.0	2.0	18.0	0.0	12.0	0.0	0.0
15	0.0	0.0	4.0	0.0	19.0	0.0	0.0	0.0	0.0	77.0	0.0	42.0
16	0.0	5.0	19.0	0.0	0.0	0.0	11.0	2.0	0.0	28.0	21.0	56.0
17	0.0	21.0	0.0	0.0	0.0	12.0	10.0	0.0	0.0	0.0	0.0	45.0
18	0.0	0.0	0.0	3.0	0.0	0.0	0.0	0.0	0.0	3.0	14.0	12.0
19	0.0	22.0	0.0	0.0	6.0	0.0	0.0	0.0	0.0	17.0	0.0	5.0
20	7.0	0.0	60.0	19.0	11.0	0.0	0.0	0.0	0.0	5.0	0.0	11.0
21	14.0	0.0	63.0	30.0	6.0	32.0	0.0	0.0	0.0	3.0	0.0	0.0
22	0.0	0.0	0.0	0.0	0.0	0.0	0.0	0.0	0.0	32.0	4.0	4.0
23	0.0	0.0	6.0	0.0	0.0	0.0	0.0	0.0	0.0	0.0	3.0	10.0
24	0.0	0.0	5.0	0.0	0.0	4.0	0.0	0.0	2.0	35.0	0.0	6.0
25	0.0	0.0	0.0	10.0	0.0	0.0	0.0	0.0	0.0	0.0	9.0	4.0
26	0.0	0.0	0.0	12.0	24.0	40.0	0.0	0.0	0.0	5.0	0.0	0.0
27	0.0	14.0	3.0	0.0	12.0	6.0	0.0	0.0	0.0	0.0	0.0	25.0
28	0.0	12.0	42.0	0.0	0.0	3.0	0.0	0.0	0.0	0.0	31.0	5.0
29	0.0		0.0	0.0	0.0	0.0	0.0	0.0	0.0	0.0	0.0	10.0
30	0.0		0.0	0.0	0.0	0.0	0.0	0.0	0.0	0.0	100.0	0.0
31	0.0		6.0		0.0		0.0	0.0		0.0		27.0
Hujan Maks	14.0	22.0	72.0	76.0	24.0	40.0	18.0	18.0	25.0	77.0	100.0	56.0
Jml. Curah Hujan	55.0	128.0	325.0	217.0	93.0	122.0	47.0	20.0	27.0	306.0	442.0	364.0
Jml. Hari Hujan	8	13	17	13	9	9	5	2	2	17	16	20
Jml. data (1-15)	15	15	15	15	15	15	15	15	15	15	15	15
Jml. Hujan (1-15)	34.0	54.0	121.0	143.0	34.0	25.0	26.0	18.0	25.0	178.0	260.0	144.0
Jml. Data (16-31)	16	13	16	15	16	15	16	16	15	16	15	16
Jml. Hujan (16-31)	21.0	74.0	204.0	74.0	59.0	97.0	21.0	2.0	2.0	128.0	182.0	220.0
Tahunan	Hujan Maksimum		Jumlah Curah Hujan				Jumlah Hari Hujan			Hujan Ekstrim		
	100.0		2146.0				131			160		

GRAFIK HUJAN (mm)

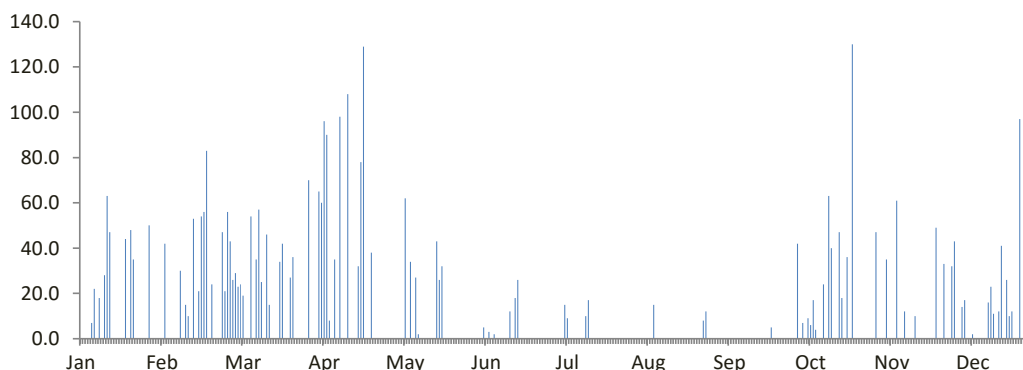


DATA CURAH HUJAN HARIAN

Nama Pos	: Banjar	Provinsi	: Jawa Tengah
Nomor Pos	: 0	Kota/Kabupaten	: Blora
Jenis Alat	: Manual	Kecamatan	: 0
Koordinat	: -'-' LS--'-' BT	Desa/Kampung	: 0
Elevasi	: -	Pengelola	: -
SWS - DAS	: K Lusi	Didirikan	: -
Tahun Pendirian	: -	Tahun	: 2022

TANGGAL	BULAN (mm)											
	Jan	Feb	Mar	Apr	Mei	Jun	Jul	Ags	Sep	Okt	Nov	Des
1	0.0	0.0	29.0	0.0	0.0	0.0	0.0	0.0	0.0	0.0	47.0	43.0
2	0.0	42.0	23.0	65.0	0.0	0.0	0.0	0.0	0.0	42.0	0.0	0.0
3	0.0	0.0	24.0	60.0	0.0	0.0	0.0	0.0	0.0	0.0	0.0	0.0
4	0.0	0.0	19.0	96.0	0.0	5.0	0.0	0.0	0.0	7.0	0.0	14.0
5	7.0	0.0	0.0	90.0	62.0	0.0	15.0	0.0	0.0	0.0	35.0	17.0
6	22.0	0.0	0.0	8.0	0.0	3.0	9.0	0.0	0.0	9.0	0.0	0.0
7	0.0	0.0	54.0	0.0	34.0	0.0	0.0	0.0	0.0	6.0	0.0	0.0
8	18.0	30.0	0.0	35.0	0.0	2.0	0.0	15.0	0.0	17.0	0.0	2.0
9	0.0	0.0	35.0	0.0	27.0	0.0	0.0	0.0	0.0	4.0	61.0	0.0
10	28.0	15.0	57.0	98.0	2.0	0.0	0.0	0.0	0.0	0.0	0.0	0.0
11	63.0	10.0	25.0	0.0	0.0	0.0	0.0	0.0	0.0	0.0	0.0	0.0
12	47.0	0.0	0.0	0.0	0.0	0.0	0.0	0.0	0.0	24.0	12.0	0.0
13	0.0	53.0	46.0	108.0	0.0	0.0	10.0	0.0	0.0	0.0	0.0	0.0
14	0.0	0.0	15.0	0.0	0.0	12.0	17.0	0.0	0.0	63.0	0.0	16.0
15	0.0	21.0	0.0	0.0	0.0	0.0	0.0	0.0	0.0	40.0	0.0	23.0
16	0.0	54.0	0.0	0.0	0.0	18.0	0.0	0.0	0.0	0.0	10.0	11.0
17	0.0	56.0	0.0	32.0	43.0	26.0	0.0	0.0	0.0	0.0	0.0	0.0
18	44.0	83.0	34.0	78.0	26.0	0.0	0.0	0.0	0.0	47.0	0.0	12.0
19	0.0	0.0	42.0	129.0	32.0	0.0	0.0	0.0	0.0	18.0	0.0	41.0
20	48.0	24.0	0.0	0.0	0.0	0.0	0.0	0.0	0.0	0.0	0.0	0.0
21	35.0	0.0	0.0	0.0	0.0	0.0	0.0	0.0	0.0	36.0	0.0	26.0
22	0.0	0.0	27.0	38.0	0.0	0.0	0.0	0.0	0.0	5.0	0.0	10.0
23	0.0	0.0	36.0	0.0	0.0	0.0	0.0	0.0	0.0	130.0	0.0	12.0
24	0.0	47.0	0.0	0.0	0.0	0.0	0.0	0.0	0.0	0.0	49.0	0.0
25	0.0	21.0	0.0	0.0	0.0	0.0	0.0	0.0	0.0	0.0	0.0	0.0
26	0.0	56.0	0.0	0.0	0.0	0.0	0.0	0.0	0.0	0.0	0.0	97.0
27	50.0	43.0	0.0	0.0	0.0	0.0	0.0	8.0	0.0	0.0	33.0	0.0
28	0.0	26.0	0.0	0.0	0.0	0.0	0.0	12.0	0.0	0.0	0.0	0.0
29	0.0		70.0	0.0	0.0	0.0	0.0	0.0	0.0	0.0	0.0	0.0
30	0.0		0.0	0.0	0.0	0.0	0.0	0.0	0.0	0.0	32.0	36.0
31	0.0		0.0		0.0		0.0	0.0		0.0		57.0
Hujan Maks	63.0	83.0	70.0	129.0	62.0	26.0	17.0	15.0	5.0	130.0	61.0	97.0
Jml. Curah Hujan	362.0	581.0	536.0	837.0	226.0	66.0	51.0	35.0	5.0	443.0	279.0	417.0
Jml. Hari Hujan	10	15	15	12	7	6	4	3	1	13	8	15
Jml. data (1-15)	15	15	15	15	15	15	15	15	15	15	15	15
Jml. Hujan (1-15)	185.0	171.0	327.0	560.0	125.0	22.0	51.0	15.0	0.0	212.0	155.0	115.0
Jml. Data (16-31)	16	13	16	15	16	15	16	16	15	16	15	16
Jml. Hujan (16-31)	177.0	410.0	209.0	277.0	101.0	44.0	0.0	20.0	5.0	231.0	124.0	302.0
Tahunan	Hujan Maksimum		Jumlah Curah Hujan			Jumlah Hari Hujan			Hujan Ekstrim			
	130.0		3838.0			109			130			

GRAFIK HUJAN (mm)

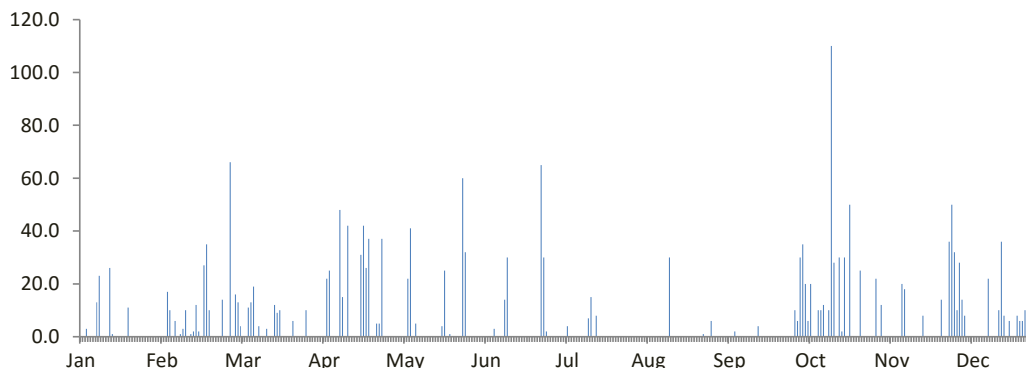


DATA CURAH HUJAN HARIAN

Nama Pos	: Blora	Provinsi	: Jawa Tengah
Nomor Pos	: 0	Kota/Kabupaten	: Blora
Jenis Alat	: Manual	Kecamatan	: -
Koordinat	: -'-' LS--'-' BT	Desa/Kampung	: Japah
Elevasi	: -	Pengelola	: -
SWS - DAS	: K Lusi	Didirikan	: -
Tahun Pendirian	: -	Tahun	: 2022

TANGGAL	BULAN (mm)											
	Jan	Feb	Mar	Apr	Mei	Jun	Jul	Ags	Sep	Okt	Nov	Des
1	0.0	0.0	16.0	0.0	0.0	0.0	0.0	0.0	0.0	10.0	22.0	32.0
2	0.0	0.0	13.0	0.0	0.0	0.0	0.0	0.0	0.0	6.0	0.0	10.0
3	3.0	17.0	4.0	0.0	0.0	0.0	0.0	0.0	0.0	30.0	12.0	28.0
4	0.0	10.0	0.0	0.0	0.0	0.0	0.0	0.0	0.0	35.0	0.0	14.0
5	0.0	0.0	0.0	22.0	0.0	0.0	0.0	0.0	0.0	20.0	0.0	8.0
6	0.0	6.0	11.0	25.0	22.0	0.0	4.0	0.0	0.0	6.0	0.0	0.0
7	13.0	0.0	13.0	0.0	41.0	0.0	0.0	0.0	0.0	20.0	0.0	0.0
8	23.0	1.0	19.0	0.0	0.0	3.0	0.0	0.0	2.0	0.0	0.0	0.0
9	0.0	3.0	0.0	0.0	5.0	0.0	0.0	0.0	0.0	0.0	0.0	0.0
10	0.0	10.0	4.0	48.0	0.0	0.0	0.0	0.0	0.0	10.0	0.0	0.0
11	0.0	0.0	0.0	15.0	0.0	0.0	0.0	0.0	0.0	10.0	20.0	0.0
12	26.0	1.0	0.0	0.0	0.0	14.0	0.0	0.0	0.0	12.0	18.0	0.0
13	1.0	2.0	3.0	42.0	0.0	30.0	0.0	0.0	0.0	0.0	0.0	0.0
14	0.0	12.0	0.0	0.0	0.0	0.0	7.0	30.0	0.0	10.0	0.0	22.0
15	0.0	2.0	0.0	0.0	0.0	0.0	15.0	0.0	0.0	110.0	0.0	0.0
16	0.0	0.0	12.0	0.0	0.0	0.0	0.0	0.0	0.0	28.0	0.0	0.0
17	0.0	27.0	9.0	0.0	0.0	0.0	8.0	0.0	4.0	0.0	0.0	0.0
18	0.0	35.0	10.0	31.0	0.0	0.0	0.0	0.0	0.0	30.0	0.0	10.0
19	11.0	10.0	0.0	42.0	4.0	0.0	0.0	0.0	0.0	2.0	8.0	36.0
20	0.0	0.0	0.0	26.0	25.0	0.0	0.0	0.0	0.0	30.0	0.0	8.0
21	0.0	0.0	0.0	37.0	0.0	0.0	0.0	0.0	0.0	0.0	0.0	0.0
22	0.0	0.0	0.0	0.0	1.0	0.0	0.0	0.0	0.0	50.0	0.0	6.0
23	0.0	0.0	6.0	0.0	0.0	0.0	0.0	0.0	0.0	0.0	0.0	0.0
24	0.0	14.0	0.0	5.0	0.0	0.0	0.0	0.0	0.0	0.0	0.0	0.0
25	0.0	0.0	0.0	5.0	0.0	0.0	0.0	0.0	0.0	0.0	0.0	8.0
26	0.0	0.0	0.0	37.0	0.0	65.0	0.0	0.0	0.0	25.0	14.0	6.0
27	0.0	66.0	0.0	0.0	60.0	30.0	0.0	1.0	0.0	0.0	0.0	6.0
28	0.0	0.0	10.0	0.0	32.0	2.0	0.0	0.0	0.0	0.0	0.0	10.0
29	0.0		0.0	0.0	0.0	0.0	0.0	0.0	0.0	36.0	10.0	
30	0.0		0.0	0.0	0.0	0.0	0.0	6.0	0.0	0.0	50.0	20.0
31	0.0		0.0		0.0		0.0	0.0		0.0		24.0
Hujan Maks	26.0	66.0	19.0	48.0	60.0	65.0	15.0	30.0	4.0	110.0	50.0	36.0
Jml. Curah Hujan	77.0	216.0	130.0	335.0	190.0	144.0	34.0	37.0	6.0	444.0	180.0	258.0
Jml. Hari Hujan	6	15	13	12	8	6	4	3	2	18	8	17
Jml. data (1-15)	15	15	15	15	15	15	15	15	15	15	15	15
Jml. Hujan (1-15)	66.0	64.0	83.0	152.0	68.0	47.0	26.0	30.0	2.0	279.0	72.0	114.0
Jml. Data (16-31)	16	13	16	15	16	15	16	16	15	16	15	16
Jml. Hujan (16-31)	11.0	152.0	47.0	183.0	122.0	97.0	8.0	7.0	4.0	165.0	108.0	144.0
Tahunan	Hujan Maksimum		Jumlah Curah Hujan				Jumlah Hari Hujan			Hujan Ekstrim		
	110.0		2051.0				112			138		

GRAFIK HUJAN (mm)

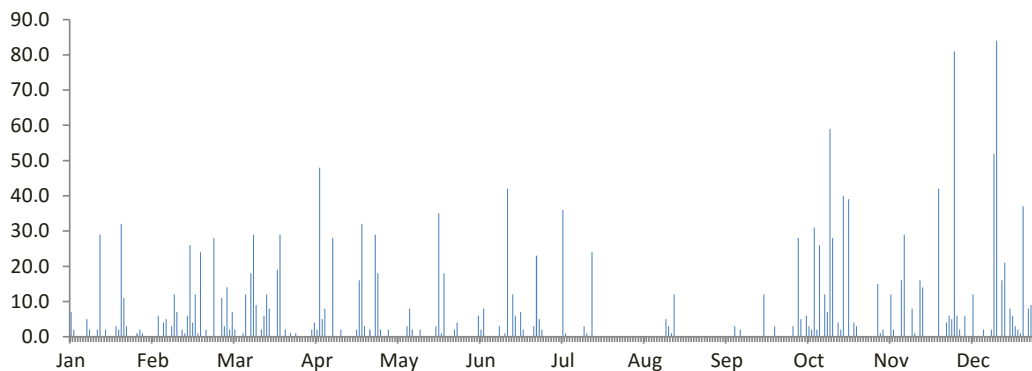


DATA CURAH HUJAN HARIAN

Nama Pos	: Kedungwaru	Provinsi	: Jawa Tengah
Nomor Pos	: -	Kota/Kabupaten	: Blora
Jenis Alat	: Manual	Kecamatan	: Kunduran
Koordinat	: 7 0' 26" LS-111 22' 30" BT	Desa/Kampung	: Kedungwaru
Elevasi	: -	Pengelola	: BPSDA Seluna
SWS - DAS	: Lusi	Didirikan	: -
Tahun Pendirian	: -	Tahun	: 2022

TANGGAL	BULAN (mm)											
	Jan	Feb	Mar	Apr	Mei	Jun	Jul	Ags	Sep	Okt	Nov	Des
1	7.0	0.0	14.0	0.0	2.0	0.0	0.0	0.0	0.0	3.0	0.0	81.0
2	2.0	0.0	2.0	2.0	0.0	0.0	0.0	0.0	0.0	0.0	15.0	6.0
3	0.0	6.0	7.0	4.0	0.0	0.0	0.0	0.0	0.0	28.0	1.0	2.0
4	0.0	0.0	2.0	2.0	0.0	6.0	0.0	0.0	0.0	5.0	2.0	0.0
5	0.0	4.0	0.0	48.0	0.0	2.0	0.0	0.0	0.0	0.0	0.0	6.0
6	0.0	5.0	0.0	5.0	0.0	8.0	36.0	0.0	0.0	6.0	0.0	0.0
7	5.0	0.0	1.0	8.0	0.0	0.0	1.0	0.0	0.0	3.0	12.0	0.0
8	2.0	3.0	12.0	0.0	3.0	0.0	0.0	0.0	0.0	2.0	2.0	12.0
9	0.0	12.0	0.0	0.0	8.0	0.0	0.0	0.0	3.0	31.0	0.0	0.0
10	0.0	7.0	18.0	28.0	2.0	0.0	0.0	0.0	0.0	2.0	0.0	0.0
11	2.0	0.0	29.0	0.0	0.0	0.0	0.0	0.0	2.0	26.0	16.0	0.0
12	29.0	2.0	9.0	0.0	0.0	3.0	0.0	0.0	0.0	0.0	29.0	2.0
13	0.0	1.0	0.0	2.0	2.0	0.0	0.0	0.0	0.0	12.0	0.0	0.0
14	2.0	6.0	2.0	0.0	0.0	1.0	3.0	5.0	0.0	7.0	0.0	0.0
15	0.0	26.0	6.0	0.0	0.0	42.0	1.0	3.0	0.0	59.0	8.0	2.0
16	0.0	4.0	12.0	0.0	0.0	0.0	0.0	1.0	0.0	28.0	1.0	52.0
17	0.0	12.0	8.0	0.0	0.0	12.0	24.0	12.0	0.0	0.0	0.0	84.0
18	3.0	1.0	0.0	0.0	0.0	6.0	0.0	0.0	0.0	4.0	16.0	0.0
19	2.0	24.0	0.0	2.0	3.0	0.0	0.0	0.0	0.0	2.0	14.0	16.0
20	32.0	0.0	19.0	16.0	35.0	7.0	0.0	0.0	12.0	40.0	0.0	21.0
21	11.0	2.0	29.0	32.0	1.0	2.0	0.0	0.0	0.0	0.0	0.0	0.0
22	3.0	0.0	0.0	3.0	18.0	0.0	0.0	0.0	0.0	39.0	0.0	8.0
23	0.0	0.0	2.0	0.0	0.0	0.0	0.0	0.0	0.0	0.0	0.0	6.0
24	0.0	28.0	0.0	2.0	0.0	0.0	0.0	0.0	3.0	4.0	0.0	3.0
25	0.0	0.0	1.0	0.0	0.0	3.0	0.0	0.0	0.0	3.0	42.0	2.0
26	1.0	0.0	0.0	29.0	2.0	23.0	0.0	0.0	0.0	0.0	0.0	1.0
27	2.0	11.0	1.0	18.0	4.0	5.0	0.0	0.0	0.0	0.0	0.0	37.0
28	1.0	3.0	0.0	2.0	0.0	2.0	0.0	0.0	0.0	0.0	4.0	0.0
29	0.0		0.0	0.0	0.0	0.0	0.0	0.0	0.0	0.0	6.0	8.0
30	0.0		0.0	0.0	0.0	0.0	0.0	0.0	0.0	0.0	5.0	9.0
31	0.0		0.0		0.0		0.0	0.0		0.0		44.0
Hujan Maks	32.0	28.0	29.0	48.0	35.0	42.0	36.0	12.0	12.0	59.0	42.0	84.0
Jml. Curah Hujan	104.0	157.0	174.0	203.0	80.0	122.0	65.0	21.0	20.0	304.0	173.0	402.0
Jml. Hari Hujan	15	18	18	16	11	14	5	4	4	19	15	20
Jml. data (1-15)	15	15	15	15	15	15	15	15	15	15	15	15
Jml. Hujan (1-15)	49.0	72.0	102.0	99.0	17.0	62.0	41.0	8.0	5.0	184.0	85.0	111.0
Jml. Data (16-31)	16	13	16	16	16	15	16	16	15	16	15	16
Jml. Hujan (16-31)	55.0	85.0	72.0	104.0	63.0	60.0	24.0	13.0	15.0	120.0	88.0	291.0
Tahunan	Hujan Maksimum		Jumlah Curah Hujan			Jumlah Hari Hujan			Hujan Ekstrim			
	84.0		1825.0			159			103			

GRAFIK HUJAN (mm)

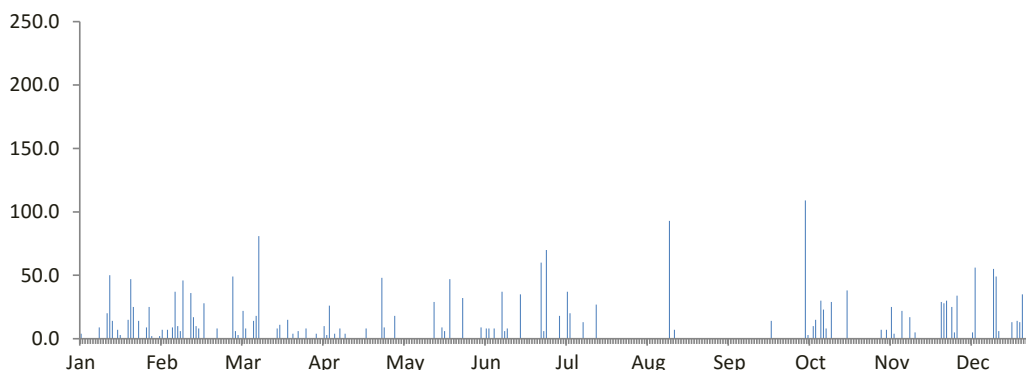


DATA CURAH HUJAN HARIAN

Nama Pos	: Sambung	Provinsi	: Jawa Tengah
Nomor Pos	: 116	Kota/Kabupaten	: Demak
Jenis Alat	: Manual	Kecamatan	: Gajah
Koordinat	: 6 53' 58.6" LS-110 47' 0.4" BT	Desa/Kampung	: Sambung
Elevasi	: -	Pengelola	: BAPUSDATARU Seluna
SWS - DAS	: -	Didirikan	: Dinas PU Pengairan
Tahun Pendirian	: -	Tahun	: 2022

TANGGAL	BULAN (mm)											
	Jan	Feb	Mar	Apr	Mei	Jun	Jul	Ags	Sep	Okt	Nov	Des
1	4.0	7.0	6.0	4.0	18.0	0.0	0.0	0.0	0.0	0.0	0.0	5.0
2	0.0	0.0	3.0	0.0	0.0	0.0	0.0	0.0	0.0	0.0	0.0	34.0
3	0.0	7.0	0.0	0.0	0.0	9.0	18.0	0.0	0.0	0.0	7.0	0.0
4	0.0	0.0	22.0	10.0	0.0	0.0	0.0	0.0	0.0	0.0	0.0	0.0
5	0.0	9.0	8.0	3.0	0.0	8.0	0.0	0.0	0.0	109.0	7.0	0.0
6	0.0	37.0	0.0	26.0	0.0	8.0	37.0	0.0	0.0	3.0	0.0	0.0
7	0.0	10.0	0.0	0.0	0.0	0.0	20.0	0.0	0.0	0.0	25.0	0.0
8	9.0	6.0	14.0	4.0	0.0	8.0	0.0	0.0	0.0	10.0	4.0	5.0
9	0.0	46.0	18.0	0.0	0.0	0.0	0.0	0.0	0.0	15.0	0.0	56.0
10	0.0	0.0	81.0	8.0	0.0	0.0	0.0	0.0	0.0	0.0	0.0	0.0
11	20.0	0.0	0.0	0.0	0.0	37.0	0.0	0.0	0.0	30.0	22.0	0.0
12	50.0	36.0	0.0	4.0	0.0	6.0	13.0	0.0	0.0	23.0	0.0	0.0
13	14.0	17.0	0.0	0.0	0.0	8.0	0.0	0.0	0.0	8.0	0.0	0.0
14	0.0	10.0	0.0	0.0	0.0	0.0	0.0	93.0	0.0	0.0	17.0	0.0
15	7.0	8.0	0.0	0.0	0.0	0.0	0.0	0.0	0.0	29.0	0.0	0.0
16	3.0	0.0	0.0	0.0	29.0	0.0	0.0	7.0	0.0	0.0	5.0	55.0
17	0.0	28.0	8.0	0.0	0.0	0.0	27.0	0.0	0.0	0.0	0.0	49.0
18	0.0	0.0	11.0	0.0	0.0	35.0	0.0	0.0	0.0	0.0	0.0	6.0
19	15.0	0.0	0.0	0.0	9.0	0.0	0.0	0.0	0.0	0.0	0.0	0.0
20	47.0	0.0	0.0	8.0	6.0	0.0	0.0	0.0	0.0	0.0	0.0	0.0
21	25.0	0.0	15.0	0.0	0.0	0.0	0.0	0.0	0.0	38.0	0.0	0.0
22	0.0	8.0	0.0	0.0	47.0	0.0	0.0	0.0	14.0	0.0	0.0	0.0
23	14.0	0.0	4.0	0.0	0.0	0.0	0.0	0.0	0.0	0.0	0.0	13.0
24	0.0	0.0	0.0	0.0	0.0	0.0	0.0	0.0	0.0	0.0	0.0	0.0
25	0.0	0.0	6.0	0.0	0.0	0.0	0.0	0.0	0.0	0.0	0.0	14.0
26	9.0	0.0	0.0	48.0	0.0	60.0	0.0	0.0	0.0	0.0	29.0	13.0
27	25.0	0.0	0.0	9.0	32.0	6.0	0.0	0.0	0.0	0.0	28.0	35.0
28	2.0	49.0	8.0	0.0	0.0	70.0	0.0	0.0	0.0	0.0	30.0	0.0
29	0.0		0.0	0.0	0.0	0.0	0.0	0.0	0.0	0.0	0.0	29.0
30	0.0		0.0	0.0	0.0	0.0	0.0	0.0	0.0	0.0	25.0	35.0
31	2.0		0.0		0.0		0.0	0.0		0.0		194.0
Hujan Maks	50.0	49.0	81.0	48.0	47.0	70.0	37.0	93.0	14.0	109.0	30.0	194.0
Jml. Curah Hujan	246.0	278.0	204.0	124.0	141.0	255.0	115.0	100.0	14.0	265.0	199.0	543.0
Jml. Hari Hujan	15	14	13	10	6	11	5	2	1	9	11	14
Jml. data (1-15)	15	15	15	15	15	15	15	15	15	15	15	15
Jml. Hujan (1-15)	104.0	193.0	152.0	59.0	18.0	84.0	88.0	93.0	0.0	227.0	82.0	100.0
Jml. Data (16-31)	16	13	16	15	16	15	16	16	15	16	15	16
Jml. Hujan (16-31)	142.0	85.0	52.0	65.0	123.0	171.0	27.0	7.0	14.0	38.0	117.0	443.0
Tahunan	Hujan Maksimum		Jumlah Curah Hujan			Jumlah Hari Hujan			Hujan Ekstrim			
	194.0		2484.0			111			194			

GRAFIK HUJAN (mm)

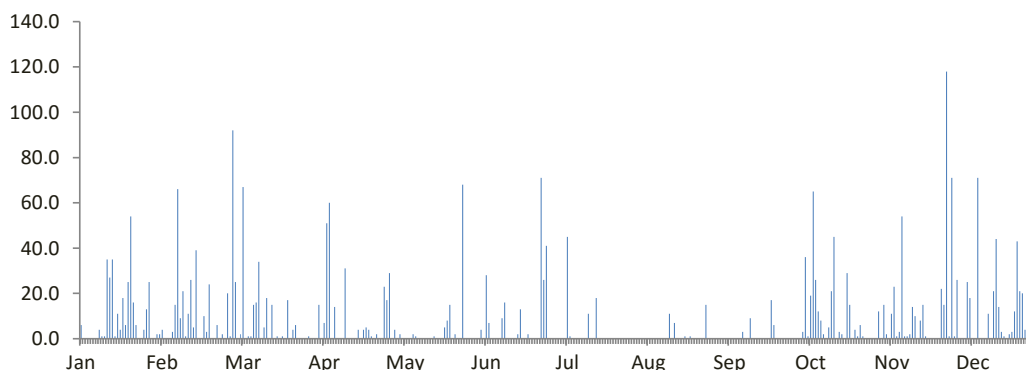


DATA CURAH HUJAN HARIAN

Nama Pos	: Karanganyar	Provinsi	: Jawa Tengah
Nomor Pos	: 165	Kota/Kabupaten	: Demak
Jenis Alat	: Manual	Kecamatan	: Karanganyar
Koordinat	: 6 53' 7.9" LS-110 33' 29.2" BT	Desa/Kampung	: Karanganyar
Elevasi	: -	Pengelola	: BAPUSDATARU Seluna
SWS - DAS	: -	Didirikan	: BPSDA Jragung Tuntang
Tahun Pendirian	: -	Tahun	: 2022

TANGGAL	BULAN (mm)											
	Jan	Feb	Mar	Apr	Mei	Jun	Jul	Ags	Sep	Okt	Nov	Des
1	6.0	4.0	25.0	0.0	4.0	0.0	0.0	0.0	0.0	0.0	0.0	1.0
2	0.0	0.0	0.0	15.0	0.0	0.0	0.0	0.0	0.0	0.0	12.0	26.0
3	0.0	0.0	2.0	0.0	2.0	4.0	0.0	0.0	0.0	0.0	0.0	0.0
4	0.0	0.0	67.0	7.0	0.0	0.0	0.0	0.0	0.0	3.0	15.0	0.0
5	0.0	3.0	0.0	51.0	0.0	28.0	0.0	0.0	0.0	36.0	2.0	0.0
6	0.0	15.0	1.0	60.0	0.0	7.0	45.0	0.0	0.0	1.0	0.0	25.0
7	0.0	66.0	1.0	0.0	0.0	0.0	1.0	0.0	0.0	19.0	11.0	18.0
8	4.0	9.0	15.0	14.0	2.0	0.0	0.0	0.0	0.0	65.0	23.0	0.0
9	1.0	21.0	16.0	0.0	1.0	0.0	0.0	0.0	0.0	26.0	1.0	0.0
10	1.0	1.0	34.0	0.0	0.0	0.0	0.0	0.0	0.0	12.0	3.0	71.0
11	35.0	11.0	0.0	0.0	0.0	9.0	0.0	0.0	3.0	8.0	54.0	0.0
12	27.0	26.0	5.0	31.0	0.0	16.0	0.0	0.0	0.0	2.0	1.0	0.0
13	35.0	5.0	18.0	0.0	0.0	0.0	0.0	0.0	0.0	0.0	1.0	0.0
14	1.0	39.0	0.0	0.0	0.0	0.0	11.0	11.0	9.0	5.0	2.0	11.0
15	11.0	0.0	15.0	0.0	0.0	0.0	0.0	0.0	0.0	21.0	14.0	0.0
16	4.0	0.0	0.0	0.0	1.0	0.0	0.0	7.0	0.0	45.0	10.0	21.0
17	18.0	10.0	1.0	4.0	0.0	2.0	18.0	0.0	0.0	0.0	0.0	44.0
18	6.0	3.0	0.0	0.0	0.0	13.0	0.0	0.0	0.0	3.0	8.0	14.0
19	25.0	24.0	1.0	4.0	0.0	0.0	0.0	0.0	0.0	2.0	15.0	3.0
20	54.0	0.0	0.0	5.0	5.0	0.0	0.0	1.0	0.0	0.0	1.0	1.0
21	16.0	0.0	17.0	4.0	8.0	2.0	0.0	0.0	0.0	29.0	0.0	0.0
22	6.0	6.0	0.0	1.0	15.0	0.0	0.0	1.0	17.0	15.0	0.0	2.0
23	0.0	0.0	4.0	0.0	0.0	0.0	0.0	0.0	6.0	0.0	0.0	3.0
24	0.0	2.0	6.0	2.0	2.0	0.0	0.0	0.0	0.0	4.0	0.0	12.0
25	4.0	0.0	0.0	0.0	0.0	0.0	0.0	0.0	0.0	1.0	0.0	43.0
26	13.0	20.0	0.0	0.0	0.0	71.0	0.0	0.0	0.0	6.0	22.0	21.0
27	25.0	1.0	0.0	23.0	68.0	26.0	0.0	0.0	0.0	1.0	15.0	20.0
28	0.0	92.0	0.0	17.0	0.0	41.0	0.0	15.0	0.0	0.0	118.0	4.0
29	0.0		1.0	29.0	0.0	0.0	0.0	0.0	0.0	0.0	1.0	51.0
30	2.0		0.0	0.0	0.0	0.0	0.0	0.0	0.0	0.0	71.0	28.0
31	2.0		0.0		0.0		0.0	0.0		0.0		120.0
Hujan Maks	54.0	92.0	67.0	60.0	68.0	71.0	45.0	15.0	17.0	65.0	118.0	120.0
Jml. Curah Hujan	296.0	358.0	229.0	267.0	108.0	219.0	75.0	35.0	35.0	304.0	400.0	539.0
Jml. Hari Hujan	21	19	17	15	10	11	4	5	4	20	21	21
Jml. data (1-15)	15	15	15	15	15	15	15	15	15	15	15	15
Jml. Hujan (1-15)	121.0	200.0	199.0	178.0	9.0	64.0	57.0	11.0	12.0	198.0	139.0	152.0
Jml. Data (16-31)	16	13	16	15	16	15	16	16	15	16	15	16
Jml. Hujan (16-31)	175.0	158.0	30.0	89.0	99.0	155.0	18.0	24.0	23.0	106.0	261.0	387.0
Tahunan	Hujan Maksimum		Jumlah Curah Hujan				Jumlah Hari Hujan			Hujan Ekstrim		
	120.0		2865.0				168			208		

GRAFIK HUJAN (mm)

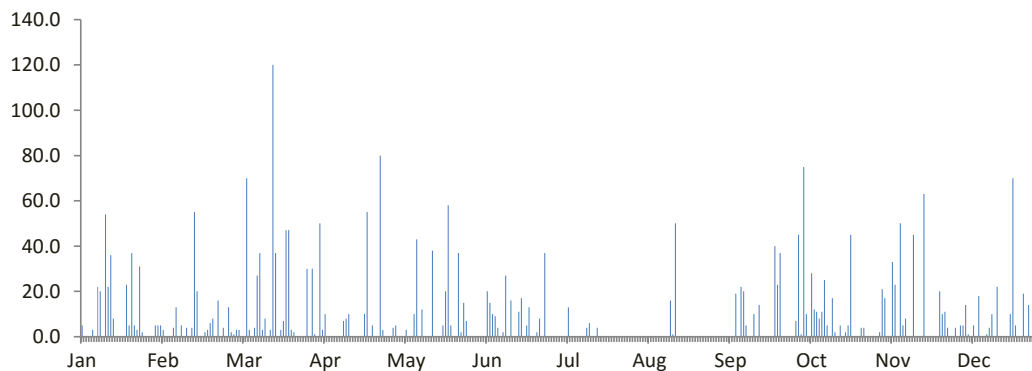


DATA CURAH HUJAN HARIAN

Nama Pos	: Sidorejo - Nglese	Provinsi	: Jawa Tengah
Nomor Pos	: -	Kota/Kabupaten	: Grobogan
Jenis Alat	: Manual	Kecamatan	: -
Koordinat	: 7 9' 47.8" LS-111 4' 2406" BT	Desa/Kampung	: -
Elevasi	: -	Pengelola	: BPSDA Seluna
SWS - DAS	: -	Didirikan	: -
Tahun Pendirian	: -	Tahun	: 2022

TANGGAL	BULAN (mm)											
	Jan	Feb	Mar	Apr	Mei	Jun	Jul	Ags	Sep	Okt	Nov	Des
1	5.0	3.0	3.0	0.0	5.0	0.0	0.0	0.0	0.0	7.0	0.0	4.0
2	0.0	0.0	3.0	50.0	0.0	0.0	0.0	0.0	0.0	45.0	2.0	0.0
3	0.0	0.0	0.0	3.0	0.0	0.0	0.0	0.0	0.0	1.0	21.0	5.0
4	0.0	0.0	0.0	10.0	0.0	0.0	0.0	0.0	0.0	75.0	17.0	5.0
5	3.0	4.0	70.0	0.0	3.0	20.0	0.0	0.0	0.0	10.0	0.0	14.0
6	0.0	13.0	3.0	0.0	0.0	15.0	13.0	0.0	0.0	0.0	0.0	1.0
7	22.0	0.0	0.0	0.0	0.0	10.0	0.0	0.0	0.0	28.0	33.0	0.0
8	20.0	5.0	4.0	0.0	10.0	9.0	0.0	0.0	19.0	12.0	23.0	5.0
9	0.0	0.0	27.0	0.0	43.0	4.0	0.0	0.0	0.0	11.0	0.0	0.0
10	54.0	4.0	37.0	0.0	0.0	0.0	0.0	0.0	22.0	8.0	50.0	18.0
11	22.0	0.0	3.0	7.0	12.0	2.0	0.0	0.0	20.0	11.0	5.0	0.0
12	36.0	4.0	8.0	8.0	0.0	27.0	0.0	0.0	5.0	25.0	8.0	0.0
13	8.0	55.0	0.0	10.0	0.0	0.0	4.0	0.0	0.0	5.0	0.0	1.0
14	0.0	20.0	3.0	0.0	0.0	16.0	6.0	16.0	0.0	0.0	0.0	4.0
15	0.0	0.0	120.0	0.0	38.0	0.0	0.0	1.0	10.0	17.0	45.0	10.0
16	0.0	0.0	37.0	0.0	0.0	0.0	0.0	50.0	0.0	2.0	0.0	0.0
17	0.0	2.0	0.0	0.0	0.0	11.0	4.0	0.0	14.0	0.0	0.0	22.0
18	23.0	3.0	3.0	0.0	0.0	17.0	0.0	0.0	0.0	5.0	0.0	0.0
19	5.0	6.0	7.0	10.0	5.0	0.0	0.0	0.0	0.0	0.0	63.0	0.0
20	37.0	8.0	47.0	55.0	20.0	5.0	0.0	0.0	0.0	2.0	0.0	0.0
21	5.0	0.0	47.0	0.0	58.0	13.0	0.0	0.0	0.0	5.0	0.0	0.0
22	3.0	16.0	3.0	5.0	5.0	0.0	0.0	0.0	0.0	45.0	0.0	10.0
23	31.0	0.0	2.0	0.0	0.0	0.0	0.0	0.0	40.0	0.0	0.0	70.0
24	2.0	4.0	0.0	0.0	0.0	2.0	0.0	0.0	23.0	0.0	0.0	5.0
25	0.0	0.0	0.0	80.0	37.0	8.0	0.0	0.0	37.0	0.0	20.0	0.0
26	0.0	13.0	0.0	3.0	2.0	0.0	0.0	0.0	0.0	4.0	10.0	0.0
27	0.0	2.0	0.0	0.0	15.0	37.0	0.0	0.0	0.0	4.0	11.0	19.0
28	0.0	1.0	30.0	0.0	7.0	0.0	0.0	0.0	0.0	0.0	4.0	0.0
29	5.0		0.0	0.0	0.0	0.0	0.0	0.0	0.0	0.0	0.0	14.0
30	5.0		30.0	4.0	0.0	0.0	0.0	0.0	0.0	0.0	0.0	0.0
31	5.0		1.0		0.0		0.0	0.0		0.0		5.0
Hujan Maks	54.0	55.0	120.0	80.0	58.0	37.0	13.0	50.0	40.0	75.0	63.0	70.0
Jml. Curah Hujan	291.0	163.0	488.0	245.0	260.0	196.0	27.0	67.0	190.0	322.0	312.0	212.0
Jml. Hari Hujan	18	17	21	12	14	15	4	3	9	20	14	17
Jml. data (1-15)	15	15	15	15	15	15	15	15	15	15	15	15
Jml. Hujan (1-15)	170.0	108.0	281.0	88.0	111.0	103.0	23.0	17.0	76.0	255.0	204.0	67.0
Jml. Data (16-31)	16	13	16	15	16	15	16	16	15	16	15	16
Jml. Hujan (16-31)	121.0	55.0	207.0	157.0	149.0	93.0	4.0	50.0	114.0	67.0	108.0	145.0
Tahunan	Hujan Maksimum		Jumlah Curah Hujan			Jumlah Hari Hujan			Hujan Ekstrim			
	120.0		2773.0			164			120			

GRAFIK HUJAN (mm)

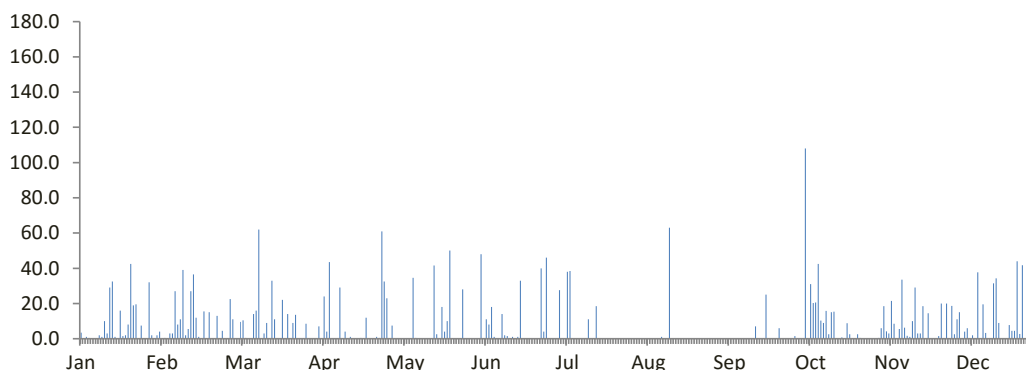


DATA CURAH HUJAN HARIAN

Nama Pos	: Wilalung	Provinsi	: Jawa Tengah
Nomor Pos	: 126 SR 17	Kota/Kabupaten	: Kudus
Jenis Alat	: Manual	Kecamatan	: Undaan
Koordinat	: 6 55' 26" LS-110 47' 37" BT	Desa/Kampung	: Kalirejo
Elevasi	: -	Pengelola	: BAPUSDATARU Seluna
SWS - DAS	: Lusi	Didirikan	: -
Tahun Pendirian	: -	Tahun	: 2022

TANGGAL	BULAN (mm)											
	Jan	Feb	Mar	Apr	Mei	Jun	Jul	Ags	Sep	Okt	Nov	Des
1	3.5	0.0	0.0	0.0	0.0	0.0	0.0	0.0	0.0	1.5	0.0	2.5
2	0.0	0.5	0.0	7.0	0.0	0.0	0.0	0.0	0.0	0.0	0.5	11.0
3	1.0	0.0	9.5	0.0	0.0	48.0	27.5	0.0	0.0	0.0	6.0	15.0
4	0.5	3.0	10.5	24.0	0.0	0.0	0.0	0.0	0.0	0.0	18.5	0.0
5	0.0	3.0	0.5	4.0	0.0	11.0	0.0	0.0	0.0	108.0	4.2	4.0
6	0.0	27.0	0.0	43.5	0.0	8.0	38.0	0.0	0.0	0.0	3.0	6.0
7	0.0	8.0	0.0	0.0	0.0	18.0	38.5	0.0	0.0	31.0	21.5	0.0
8	2.0	11.0	14.0	0.0	34.5	1.0	0.0	0.0	0.0	20.2	8.5	2.0
9	1.0	39.0	16.0	0.0	0.5	0.0	0.0	0.0	0.0	20.5	0.0	0.0
10	10.0	2.0	62.0	29.0	0.0	0.0	0.0	0.0	0.0	42.5	5.5	37.7
11	3.0	5.5	0.0	0.0	0.0	14.0	0.0	1.0	0.0	10.3	33.5	0.0
12	29.0	27.0	3.0	4.0	0.0	2.0	0.0	0.0	0.0	9.0	6.3	19.5
13	32.5	36.5	9.0	0.0	0.0	1.5	0.0	0.0	0.0	15.8	1.7	3.3
14	1.0	12.0	0.0	1.0	0.0	0.0	11.0	63.0	0.0	2.5	1.0	0.0
15	0.0	1.0	33.0	0.0	0.0	1.0	0.0	0.0	0.0	15.0	10.0	0.0
16	16.0	0.0	11.0	0.0	41.5	0.0	0.0	0.0	7.0	15.3	29.0	31.5
17	1.5	15.5	0.0	0.0	2.5	1.0	18.5	0.0	0.0	0.0	3.0	34.3
18	2.0	0.0	0.0	0.5	0.0	33.0	0.0	0.0	0.0	0.0	3.0	9.0
19	8.0	15.0	22.0	0.0	18.0	0.0	0.0	0.0	0.0	0.7	18.5	0.0
20	42.5	0.0	0.0	12.0	4.0	0.0	0.0	0.0	25.0	0.0	0.0	0.0
21	19.0	0.0	14.0	0.0	10.0	0.0	0.0	0.0	0.0	8.8	14.5	0.0
22	19.5	13.0	0.0	0.0	50.0	0.0	0.0	0.0	0.0	2.5	0.0	7.7
23	0.0	0.0	9.0	0.0	0.0	0.0	0.0	0.0	0.0	0.0	0.0	4.5
24	7.5	4.5	13.5	1.0	0.0	0.0	0.0	0.0	0.0	0.0	0.0	4.5
25	0.0	0.0	0.0	0.5	0.0	0.0	0.0	0.0	6.0	2.5	1.5	44.0
26	0.0	0.0	0.0	61.0	0.0	40.0	0.0	0.0	0.0	0.5	20.0	2.7
27	32.0	22.5	0.0	32.5	28.0	4.0	0.0	0.0	0.0	0.0	0.0	41.7
28	2.0	11.0	8.5	23.0	0.0	46.0	0.0	0.0	0.0	0.0	20.0	0.0
29	0.0		0.0	0.0	0.0	0.0	0.0	0.0	0.0	0.0	0.0	30.8
30	2.0		0.0	7.5	0.0	0.0	0.0	0.0	0.0	0.0	18.6	16.5
31	4.0		0.0		0.0		0.0	0.0		0.0		154.2
Hujan Maks	42.5	39.0	62.0	61.0	50.0	48.0	38.5	63.0	25.0	108.0	33.5	154.2
Jml. Curah Hujan	239.5	257.0	235.5	250.5	189.0	228.5	133.5	64.0	38.0	306.6	248.3	482.4
Jml. Hari Hujan	22	19	15	15	9	14	5	2	3	17	22	21
Jml. data (1-15)	15	15	15	15	15	15	15	15	15	15	15	15
Jml. Hujan (1-15)	83.5	175.5	157.5	112.5	35.0	104.5	115.0	64.0	0.0	276.3	120.2	101.0
Jml. Data (16-31)	16	13	16	15	16	15	16	16	15	16	15	16
Jml. Hujan (16-31)	156.0	81.5	78.0	138.0	154.0	124.0	18.5	0.0	38.0	30.3	128.1	381.4
Tahunan	Hujan Maksimum		Jumlah Curah Hujan			Jumlah Hari Hujan			Hujan Ekstrim			
	154.2		2672.8			164			198			

GRAFIK HUJAN (mm)

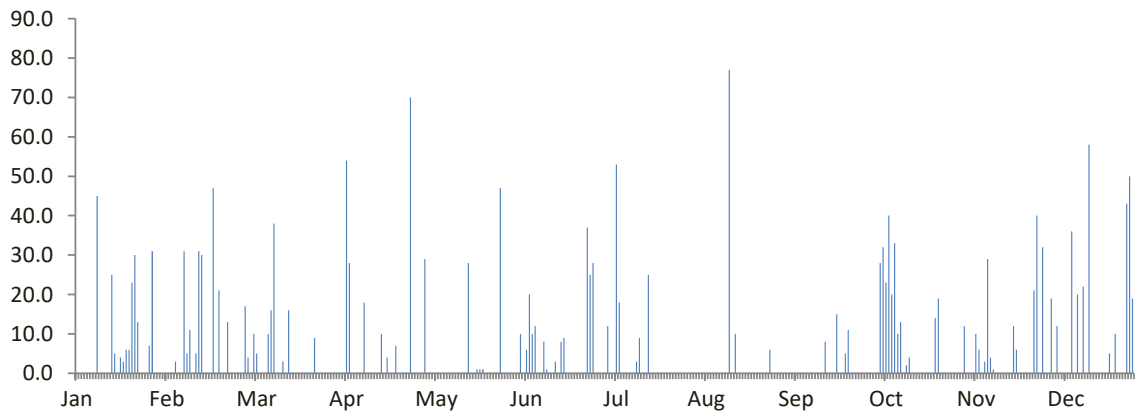


DATA CURAH HUJAN HARIAN

Nama Pos : Berugenjang	Provinsi : Jawa Tengah
Nomor Pos : 129 JAN 1	Kota/Kabupaten : Kudus
Jenis Alat : Manual	Kecamatan : Undaan
Koordinat : 6 56' 36" LS-110 48' 26" BT	Desa/Kampung : Lambangan
Elevasi : -	Pengelola : BAPUSDATARU Seluna
SWS - DAS : -	Didirikan : -
Tahun Pendirian : -	Tahun : 2022

TANGGAL	BULAN (mm)											
	Jan	Feb	Mar	Apr	Mei	Jun	Jul	Ags	Sep	Okt	Nov	Des
1	0.0	0.0	4.0	0.0	29.0	0.0	0.0	0.0	0.0	0.0	0.0	0.0
2	0.0	0.0	0.0	0.0	0.0	0.0	0.0	0.0	0.0	0.0	0.0	0.0
3	0.0	0.0	10.0	0.0	0.0	10.0	12.0	0.0	0.0	0.0	12.0	19.0
4	0.0	3.0	5.0	54.0	0.0	0.0	0.0	0.0	0.0	0.0	0.0	0.0
5	0.0	0.0	0.0	28.0	0.0	6.0	0.0	0.0	0.0	28.0	0.0	12.0
6	0.0	0.0	0.0	0.0	0.0	20.0	53.0	0.0	0.0	32.0	0.0	0.0
7	0.0	31.0	0.0	0.0	0.0	10.0	18.0	0.0	0.0	23.0	10.0	0.0
8	45.0	5.0	10.0	0.0	0.0	12.0	0.0	0.0	0.0	40.0	6.0	0.0
9	0.0	11.0	16.0	0.0	0.0	0.0	0.0	0.0	0.0	20.0	0.0	0.0
10	0.0	0.0	38.0	18.0	0.0	0.0	0.0	0.0	0.0	33.0	3.0	36.0
11	0.0	5.0	0.0	0.0	0.0	8.0	0.0	0.0	0.0	10.0	29.0	0.0
12	0.0	31.0	0.0	0.0	0.0	1.0	0.0	0.0	0.0	13.0	4.0	20.0
13	25.0	30.0	3.0	0.0	0.0	0.0	3.0	0.0	0.0	0.0	1.0	0.0
14	5.0	0.0	0.0	0.0	0.0	0.0	9.0	77.0	0.0	2.0	0.0	22.0
15	0.0	0.0	16.0	0.0	0.0	3.0	0.0	0.0	0.0	4.0	0.0	0.0
16	4.0	0.0	0.0	10.0	28.0	0.0	0.0	10.0	8.0	0.0	0.0	58.0
17	3.0	47.0	0.0	0.0	0.0	8.0	25.0	0.0	0.0	0.0	0.0	0.0
18	6.0	0.0	0.0	4.0	0.0	9.0	0.0	0.0	0.0	0.0	0.0	0.0
19	6.0	21.0	0.0	0.0	1.0	0.0	0.0	0.0	0.0	0.0	0.0	0.0
20	23.0	0.0	0.0	0.0	1.0	0.0	0.0	0.0	15.0	0.0	12.0	0.0
21	30.0	0.0	0.0	7.0	1.0	0.0	0.0	0.0	0.0	0.0	6.0	0.0
22	13.0	13.0	0.0	0.0	0.0	0.0	0.0	0.0	0.0	0.0	0.0	0.0
23	0.0	0.0	0.0	0.0	0.0	0.0	0.0	0.0	5.0	0.0	0.0	5.0
24	0.0	0.0	9.0	0.0	0.0	0.0	0.0	0.0	11.0	14.0	0.0	0.0
25	0.0	0.0	0.0	0.0	0.0	0.0	0.0	0.0	0.0	19.0	0.0	10.0
26	7.0	0.0	0.0	70.0	0.0	37.0	0.0	0.0	0.0	0.0	0.0	0.0
27	31.0	0.0	0.0	0.0	47.0	25.0	0.0	0.0	0.0	0.0	21.0	0.0
28	0.0	17.0	0.0	0.0	0.0	28.0	0.0	6.0	0.0	0.0	40.0	0.0
29	0.0		0.0	0.0	0.0	0.0	0.0	0.0	0.0	0.0	0.0	43.0
30	0.0		0.0	0.0	0.0	0.0	0.0	0.0	0.0	0.0	32.0	50.0
31	0.0		0.0		0.0		0.0	0.0		0.0		19.0
Hujan Maks	45.0	47.0	38.0	70.0	47.0	37.0	53.0	77.0	15.0	40.0	40.0	58.0
Jml. Curah Hujan	198.0	214.0	111.0	191.0	107.0	177.0	120.0	93.0	39.0	238.0	176.0	294.0
Jml. Hari Hujan	12	11	9	7	6	13	6	3	4	12	12	11
Jml. data (1-15)	15	15	15	15	15	15	15	15	15	15	15	15
Jml. Hujan (1-15)	75.0	116.0	102.0	100.0	29.0	70.0	95.0	77.0	0.0	205.0	65.0	109.0
Jml. Data (16-31)	16	13	16	15	16	15	16	16	15	16	15	16
Jml. Hujan (16-31)	123.0	98.0	9.0	91.0	78.0	107.0	25.0	16.0	39.0	33.0	111.0	185.0
Tahunan	Hujan Maksimum			Jumlah Curah Hujan			Jumlah Hari Hujan			Hujan Ekstrim		
	77.0			1958.0			106			150		

GRAFIK HUJAN (mm)

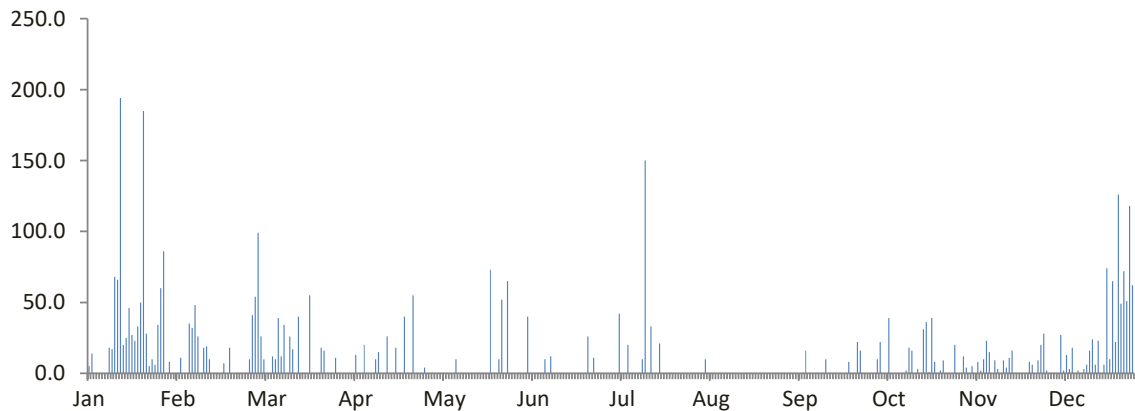


DATA CURAH HUJAN HARIAN

Nama Pos : Rahtawu	Provinsi : Jawa Tengah
Nomor Pos : 156 SR 30	Kota/Kabupaten : Kudus
Jenis Alat : Manual	Kecamatan : Gebog
Koordinat : 6 39' 55" LS-110 51' 25" BT	Desa/Kampung : Rahtawu
Elevasi : -	Pengelola : BAPUSDATARU Seluna
SWS - DAS : Lusi	Didirikan : -
Tahun Pendirian : -	Tahun : 2022

TANGGAL	BULAN (mm)											
	Jan	Feb	Mar	Apr	Mei	Jun	Jul	Ags	Sep	Okt	Nov	Des
1	5.0	0.0	99.0	0.0	0.0	0.0	0.0	0.0	0.0	0.0	0.0	2.0
2	14.0	11.0	26.0	0.0	0.0	0.0	0.0	0.0	0.0	0.0	12.0	0.0
3	0.0	0.0	10.0	0.0	0.0	40.0	0.0	0.0	0.0	10.0	4.0	0.0
4	0.0	0.0	0.0	13.0	0.0	0.0	0.0	10.0	0.0	22.0	0.0	0.0
5	0.0	35.0	0.0	0.0	0.0	0.0	42.0	0.0	0.0	0.0	5.0	0.0
6	0.0	32.0	12.0	0.0	0.0	0.0	0.0	0.0	0.0	0.0	0.0	27.0
7	0.0	48.0	10.0	20.0	0.0	0.0	0.0	0.0	0.0	39.0	8.0	2.0
8	18.0	26.0	39.0	0.0	0.0	0.0	20.0	0.0	16.0	0.0	2.0	13.0
9	17.0	0.0	12.0	0.0	10.0	10.0	0.0	0.0	0.0	0.0	10.0	3.0
10	68.0	18.0	34.0	0.0	0.0	0.0	0.0	0.0	0.0	0.0	23.0	18.0
11	66.0	19.0	0.0	10.0	0.0	12.0	0.0	0.0	0.0	0.0	15.0	0.0
12	194.0	10.0	26.0	15.0	0.0	0.0	0.0	0.0	0.0	0.0	0.0	2.0
13	20.0	0.0	17.0	0.0	0.0	0.0	10.0	0.0	0.0	2.0	9.0	0.0
14	25.0	0.0	0.0	0.0	0.0	0.0	150.0	0.0	0.0	18.0	3.0	3.0
15	46.0	0.0	40.0	26.0	0.0	0.0	0.0	0.0	10.0	16.0	0.0	6.0
16	27.0	0.0	0.0	0.0	0.0	0.0	33.0	0.0	0.0	0.0	9.0	16.0
17	23.0	7.0	0.0	0.0	0.0	0.0	0.0	0.0	0.0	3.0	4.0	24.0
18	33.0	0.0	0.0	18.0	0.0	0.0	0.0	0.0	0.0	0.0	11.0	6.0
19	50.0	18.0	55.0	0.0	0.0	0.0	21.0	0.0	0.0	31.0	16.0	23.0
20	185.0	0.0	0.0	0.0	0.0	0.0	0.0	0.0	0.0	36.0	0.0	0.0
21	28.0	0.0	0.0	40.0	73.0	0.0	0.0	0.0	0.0	1.0	0.0	6.0
22	5.0	0.0	0.0	0.0	0.0	0.0	0.0	0.0	0.0	39.0	0.0	74.0
23	10.0	0.0	18.0	0.0	0.0	0.0	0.0	0.0	8.0	8.0	0.0	10.0
24	6.0	0.0	16.0	55.0	10.0	26.0	0.0	0.0	0.0	0.0	0.0	65.0
25	34.0	0.0	0.0	0.0	52.0	0.0	0.0	0.0	0.0	2.0	8.0	22.0
26	60.0	10.0	0.0	0.0	0.0	11.0	0.0	0.0	22.0	9.0	6.0	126.0
27	86.0	41.0	0.0	0.0	65.0	0.0	0.0	0.0	16.0	0.0	0.0	49.0
28	0.0	54.0	11.0	4.0	0.0	0.0	0.0	0.0	0.0	0.0	9.0	72.0
29	8.0		0.0	0.0	0.0	0.0	0.0	0.0	0.0	0.0	20.0	51.0
30	0.0		0.0	0.0	0.0	0.0	0.0	0.0	0.0	20.0	28.0	118.0
31	0.0		0.0		0.0		0.0	0.0		0.0		62.0
Hujan Maks	194.0	54.0	99.0	55.0	73.0	40.0	150.0	10.0	22.0	39.0	28.0	126.0
Jml. Curah Hujan	1028.0	329.0	425.0	201.0	210.0	99.0	276.0	10.0	72.0	256.0	202.0	800.0
Jml. Hari Hujan	23	13	15	9	5	5	6	1	5	15	19	24
Jml. data (1-15)	15	15	15	15	15	15	15	15	15	15	15	15
Jml. Hujan (1-15)	473.0	199.0	325.0	84.0	10.0	62.0	222.0	10.0	26.0	107.0	91.0	76.0
Jml. Data (16-31)	16	13	16	15	16	15	16	16	15	16	15	16
Jml. Hujan (16-31)	555.0	130.0	100.0	117.0	200.0	37.0	54.0	0.0	46.0	149.0	111.0	724.0
Tahunan	Hujan Maksimum			Jumlah Curah Hujan			Jumlah Hari Hujan			Hujan Ekstrim		
	194.0			3908.0			140			332		

GRAFIK HUJAN (mm)

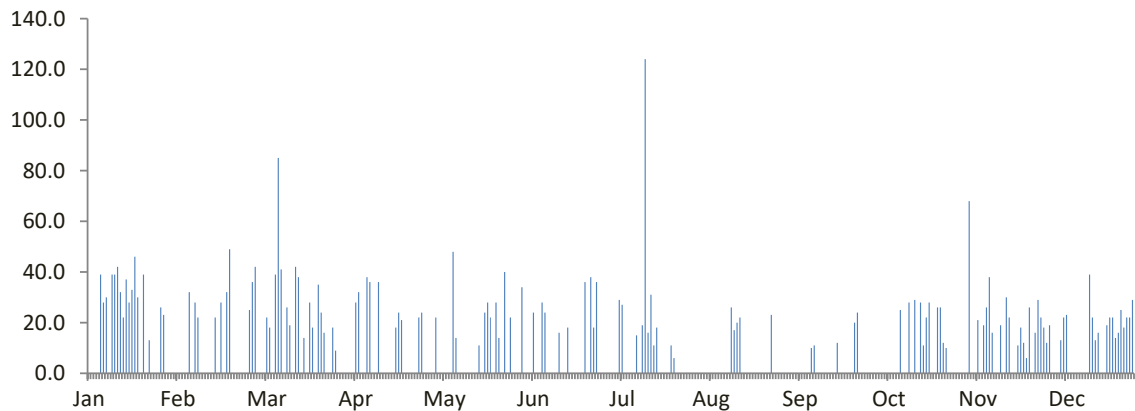


DATA CURAH HUJAN HARIAN

Nama Pos	: Wd. Gunung Rowo	Provinsi	: Jawa Tengah
Nomor Pos	: 181 a	Kota/Kabupaten	: Pati
Jenis Alat	: Manual	Kecamatan	: Tlogo wungu
Koordinat	: 6 34' 16.8" LS-110 58' 31.4" BT	Desa/Kampung	: Gunung Rowo
Elevasi	: -	Pengelola	: BPSDA Seluna
SWS - DAS	: -	Didirikan	: -
Tahun Pendirian	: -	Tahun	: 2022

TANGGAL	BULAN (mm)											
	Jan	Feb	Mar	Apr	Mei	Jun	Jul	Ags	Sep	Okt	Nov	Des
1	0.0	0.0	0.0	0.0	0.0	34.0	0.0	0.0	0.0	0.0	0.0	12.0
2	0.0	0.0	0.0	0.0	22.0	0.0	0.0	0.0	0.0	0.0	0.0	19.0
3	0.0	0.0	0.0	0.0	0.0	0.0	0.0	0.0	0.0	0.0	0.0	0.0
4	0.0	0.0	22.0	28.0	0.0	0.0	0.0	0.0	0.0	0.0	68.0	0.0
5	39.0	32.0	18.0	32.0	0.0	24.0	29.0	0.0	0.0	0.0	0.0	0.0
6	28.0	0.0	0.0	0.0	0.0	0.0	27.0	0.0	0.0	0.0	0.0	13.0
7	30.0	28.0	39.0	0.0	0.0	0.0	0.0	0.0	0.0	0.0	21.0	22.0
8	0.0	22.0	85.0	38.0	48.0	28.0	0.0	0.0	0.0	0.0	0.0	23.0
9	39.0	0.0	41.0	36.0	14.0	24.0	0.0	0.0	0.0	0.0	19.0	0.0
10	39.0	0.0	0.0	0.0	0.0	0.0	0.0	0.0	10.0	0.0	26.0	0.0
11	42.0	0.0	26.0	0.0	0.0	0.0	15.0	0.0	11.0	25.0	38.0	0.0
12	32.0	0.0	19.0	36.0	0.0	0.0	0.0	0.0	0.0	0.0	16.0	0.0
13	22.0	0.0	0.0	0.0	0.0	0.0	19.0	26.0	0.0	0.0	0.0	0.0
14	37.0	22.0	42.0	0.0	0.0	16.0	124.0	17.0	0.0	28.0	0.0	0.0
15	28.0	0.0	38.0	0.0	0.0	0.0	16.0	20.0	0.0	0.0	19.0	0.0
16	33.0	28.0	0.0	0.0	0.0	0.0	31.0	22.0	0.0	29.0	0.0	39.0
17	46.0	0.0	14.0	0.0	11.0	18.0	11.0	0.0	0.0	0.0	30.0	22.0
18	30.0	32.0	0.0	18.0	0.0	0.0	18.0	0.0	0.0	28.0	22.0	13.0
19	0.0	49.0	28.0	24.0	24.0	0.0	0.0	0.0	12.0	11.0	0.0	16.0
20	39.0	0.0	18.0	21.0	28.0	0.0	0.0	0.0	0.0	22.0	0.0	0.0
21	0.0	0.0	0.0	0.0	22.0	0.0	0.0	0.0	0.0	28.0	11.0	0.0
22	13.0	0.0	35.0	0.0	0.0	0.0	0.0	0.0	0.0	0.0	18.0	19.0
23	0.0	0.0	24.0	0.0	28.0	36.0	11.0	0.0	0.0	0.0	12.0	22.0
24	0.0	0.0	16.0	0.0	14.0	0.0	6.0	0.0	0.0	26.0	6.0	22.0
25	0.0	0.0	0.0	0.0	0.0	38.0	0.0	0.0	20.0	26.0	26.0	14.0
26	26.0	25.0	0.0	22.0	40.0	18.0	0.0	0.0	24.0	12.0	0.0	16.0
27	23.0	36.0	18.0	24.0	0.0	36.0	0.0	23.0	0.0	10.0	16.0	25.0
28	0.0	42.0	9.0	0.0	22.0	0.0	0.0	0.0	0.0	0.0	29.0	18.0
29	0.0		0.0	0.0	0.0	0.0	0.0	0.0	0.0	0.0	22.0	22.0
30	0.0		0.0	0.0	0.0	0.0	0.0	0.0	0.0	0.0	18.0	22.0
31	0.0		0.0		0.0		0.0	0.0		0.0		29.0
Hujan Maks	46.0	49.0	85.0	38.0	48.0	38.0	124.0	26.0	24.0	29.0	68.0	39.0
Jml. Curah Hujan	546.0	316.0	492.0	279.0	273.0	272.0	307.0	108.0	77.0	245.0	417.0	388.0
Jml. Hari Hujan	17	10	17	10	11	10	11	5	5	11	18	19
Jml. data (1-15)	15	15	15	15	15	15	15	15	15	15	15	15
Jml. Hujan (1-15)	336.0	104.0	330.0	170.0	84.0	126.0	230.0	63.0	21.0	53.0	207.0	89.0
Jml. Data (16-31)	16	13	16	15	16	15	16	16	15	16	15	16
Jml. Hujan (16-31)	210.0	212.0	162.0	109.0	189.0	146.0	77.0	45.0	56.0	192.0	210.0	299.0
Tahunan	Hujan Maksimum			Jumlah Curah Hujan			Jumlah Hari Hujan			Hujan Ekstrim		
	124.0			3720.0			144			263		

GRAFIK HUJAN (mm)

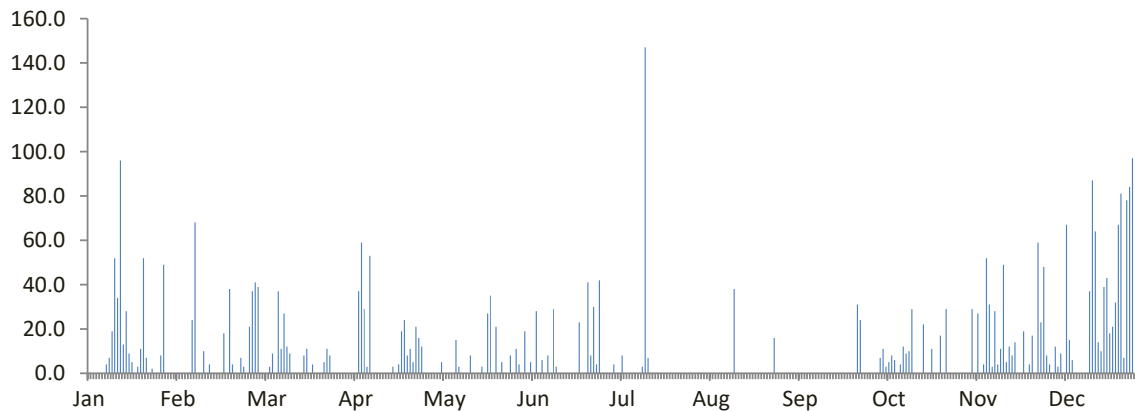


DATA CURAH HUJAN HARIAN

Nama Pos	: Wd. Gembong	Provinsi	: Jawa Tengah
Nomor Pos	: 182	Kota/Kabupaten	: Pati
Jenis Alat	: Manual	Kecamatan	: Gembong
Koordinat	: 6 41' 46" LS-110 57' 34" BT	Desa/Kampung	: Gembong
Elevasi	: -	Pengelola	: BAPUSDATARU Seluna
SWS - DAS	: Juana	Didirikan	: -
Tahun Pendirian	: -	Tahun	: 2022

TANGGAL	BULAN (mm)											
	Jan	Feb	Mar	Apr	Mei	Jun	Jul	Ags	Sep	Okt	Nov	Des
1	0.0	0.0	39.0	0.0	0.0	0.0	0.0	0.0	0.0	0.0	0.0	8.0
2	0.0	0.0	0.0	0.0	0.0	19.0	0.0	0.0	0.0	0.0	0.0	4.0
3	0.0	0.0	0.0	0.0	0.0	0.0	4.0	0.0	0.0	0.0	0.0	0.0
4	0.0	0.0	0.0	0.0	5.0	5.0	0.0	0.0	0.0	7.0	0.0	12.0
5	0.0	0.0	3.0	37.0	0.0	0.0	0.0	0.0	0.0	11.0	29.0	3.0
6	0.0	24.0	9.0	59.0	0.0	28.0	8.0	0.0	0.0	3.0	0.0	9.0
7	4.0	68.0	0.0	29.0	0.0	0.0	0.0	0.0	0.0	5.0	27.0	0.0
8	7.0	0.0	37.0	3.0	0.0	6.0	0.0	0.0	0.0	8.0	0.0	67.0
9	19.0	0.0	11.0	53.0	15.0	0.0	0.0	0.0	0.0	6.0	4.0	15.0
10	52.0	10.0	27.0	0.0	3.0	8.0	0.0	0.0	0.0	0.0	52.0	6.0
11	34.0	0.0	12.0	0.0	0.0	0.0	0.0	0.0	0.0	4.0	31.0	0.0
12	96.0	4.0	9.0	0.0	0.0	29.0	0.0	0.0	0.0	12.0	3.0	0.0
13	13.0	0.0	0.0	0.0	0.0	3.0	3.0	0.0	0.0	9.0	28.0	0.0
14	28.0	0.0	0.0	0.0	8.0	0.0	147.0	38.0	0.0	10.0	4.0	0.0
15	9.0	0.0	0.0	0.0	0.0	0.0	7.0	0.0	0.0	29.0	11.0	0.0
16	5.0	0.0	0.0	0.0	0.0	0.0	0.0	0.0	0.0	0.0	49.0	37.0
17	0.0	18.0	8.0	3.0	0.0	0.0	0.0	0.0	0.0	0.0	5.0	87.0
18	3.0	0.0	11.0	0.0	3.0	0.0	0.0	0.0	0.0	0.0	12.0	64.0
19	11.0	38.0	0.0	4.0	0.0	0.0	0.0	0.0	0.0	22.0	8.0	14.0
20	52.0	4.0	4.0	19.0	27.0	0.0	0.0	0.0	0.0	0.0	14.0	10.0
21	7.0	0.0	0.0	24.0	35.0	23.0	0.0	0.0	0.0	0.0	0.0	39.0
22	0.0	0.0	0.0	8.0	0.0	0.0	0.0	0.0	0.0	11.0	0.0	43.0
23	2.0	7.0	0.0	11.0	21.0	0.0	0.0	0.0	0.0	0.0	19.0	18.0
24	0.0	3.0	5.0	5.0	0.0	41.0	0.0	0.0	0.0	0.0	0.0	21.0
25	0.0	0.0	11.0	21.0	5.0	8.0	0.0	0.0	0.0	17.0	4.0	32.0
26	8.0	21.0	8.0	16.0	0.0	30.0	0.0	0.0	31.0	0.0	17.0	67.0
27	49.0	37.0	0.0	12.0	0.0	4.0	0.0	0.0	24.0	29.0	0.0	81.0
28	0.0	41.0	0.0	0.0	8.0	42.0	0.0	16.0	0.0	0.0	59.0	7.0
29	0.0		0.0	0.0	0.0	0.0	0.0	0.0	0.0	0.0	23.0	78.0
30	0.0		0.0	0.0	11.0	0.0	0.0	0.0	0.0	0.0	48.0	84.0
31	0.0		0.0		4.0		0.0	0.0		0.0		97.0
Hujan Maks	96.0	68.0	39.0	59.0	35.0	42.0	147.0	38.0	31.0	29.0	59.0	97.0
Jml. Curah Hujan	399.0	275.0	194.0	304.0	145.0	246.0	169.0	54.0	55.0	183.0	447.0	903.0
Jml. Hari Hujan	17	12	14	15	12	13	5	2	2	15	20	24
Jml. data (1-15)	15	15	15	15	15	15	15	15	15	15	15	15
Jml. Hujan (1-15)	262.0	106.0	147.0	181.0	31.0	98.0	169.0	38.0	0.0	104.0	189.0	124.0
Jml. Data (16-31)	16	13	16	15	16	15	16	16	15	16	15	16
Jml. Hujan (16-31)	137.0	169.0	47.0	123.0	114.0	148.0	0.0	16.0	55.0	79.0	258.0	779.0
Tahunan	Hujan Maksimum		Jumlah Curah Hujan			Jumlah Hari Hujan			Hujan Ekstrim			
	147.0		3374.0			151			425			

GRAFIK HUJAN (mm)

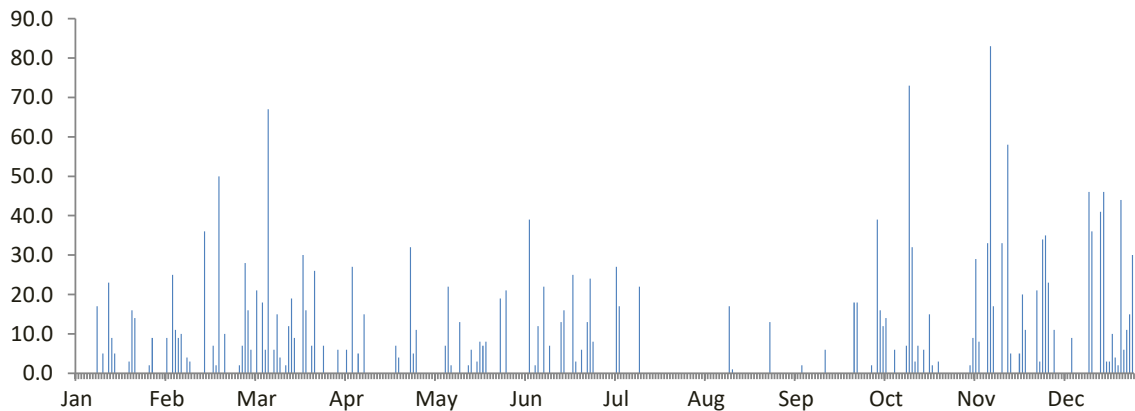


DATA CURAH HUJAN HARIAN

Nama Pos : Pucakwangi	Provinsi : Jawa Tengah
Nomor Pos : 0	Kota/Kabupaten : Pati
Jenis Alat : Manual	Kecamatan : Pucakwangi
Koordinat : 6 49' 30.7" LS-111 7' 56.7" BT	Desa/Kampung : Triguno
Elevasi : -	Pengelola : -
SWS - DAS : K Lusi	Didirikan : -
Tahun Pendirian : -	Tahun : 2022

TANGGAL	BULAN (mm)											
	Jan	Feb	Mar	Apr	Mei	Jun	Jul	Ags	Sep	Okt	Nov	Des
1	0.0	9.0	16.0	6.0	0.0	0.0	0.0	0.0	0.0	0.0	0.0	35.0
2	0.0	0.0	6.0	0.0	0.0	0.0	0.0	0.0	0.0	2.0	0.0	23.0
3	0.0	25.0	0.0	0.0	0.0	0.0	0.0	0.0	0.0	0.0	0.0	0.0
4	0.0	11.0	21.0	6.0	0.0	0.0	0.0	0.0	0.0	39.0	0.0	11.0
5	0.0	9.0	0.0	0.0	0.0	0.0	0.0	0.0	0.0	16.0	2.0	0.0
6	0.0	10.0	18.0	27.0	0.0	39.0	27.0	0.0	0.0	12.0	9.0	0.0
7	0.0	0.0	6.0	0.0	0.0	0.0	17.0	0.0	0.0	14.0	29.0	0.0
8	17.0	4.0	67.0	5.0	7.0	2.0	0.0	0.0	2.0	0.0	8.0	0.0
9	0.0	3.0	0.0	0.0	22.0	12.0	0.0	0.0	0.0	0.0	0.0	0.0
10	5.0	0.0	6.0	15.0	2.0	0.0	0.0	0.0	0.0	6.0	0.0	9.0
11	0.0	0.0	15.0	0.0	0.0	22.0	0.0	0.0	0.0	0.0	33.0	0.0
12	23.0	0.0	4.0	0.0	0.0	0.0	0.0	0.0	0.0	0.0	83.0	0.0
13	9.0	0.0	0.0	0.0	13.0	7.0	0.0	0.0	0.0	0.0	17.0	0.0
14	5.0	36.0	2.0	0.0	0.0	0.0	22.0	17.0	0.0	7.0	0.0	0.0
15	0.0	0.0	12.0	0.0	0.0	0.0	0.0	1.0	0.0	73.0	0.0	0.0
16	0.0	0.0	19.0	0.0	2.0	0.0	0.0	0.0	6.0	32.0	33.0	46.0
17	0.0	7.0	9.0	0.0	6.0	13.0	0.0	0.0	0.0	3.0	0.0	36.0
18	0.0	2.0	0.0	0.0	0.0	16.0	0.0	0.0	0.0	7.0	58.0	0.0
19	3.0	50.0	0.0	0.0	3.0	0.0	0.0	0.0	0.0	0.0	5.0	0.0
20	16.0	0.0	30.0	0.0	8.0	0.0	0.0	0.0	0.0	6.0	0.0	41.0
21	14.0	10.0	16.0	7.0	7.0	25.0	0.0	0.0	0.0	0.0	0.0	46.0
22	0.0	0.0	0.0	4.0	8.0	3.0	0.0	0.0	0.0	15.0	5.0	3.0
23	0.0	0.0	7.0	0.0	0.0	0.0	0.0	0.0	0.0	2.0	20.0	3.0
24	0.0	0.0	26.0	0.0	0.0	6.0	0.0	0.0	0.0	0.0	11.0	10.0
25	0.0	0.0	0.0	0.0	0.0	0.0	0.0	0.0	0.0	3.0	0.0	4.0
26	2.0	2.0	0.0	32.0	0.0	13.0	0.0	0.0	18.0	0.0	0.0	2.0
27	9.0	7.0	7.0	5.0	19.0	24.0	0.0	0.0	18.0	0.0	0.0	44.0
28	0.0	28.0	0.0	11.0	0.0	8.0	0.0	13.0	0.0	0.0	21.0	6.0
29	0.0		0.0	0.0	21.0	0.0	0.0	0.0	0.0	0.0	3.0	11.0
30	0.0		0.0	0.0	0.0	0.0	0.0	0.0	0.0	0.0	34.0	15.0
31	0.0		0.0		0.0		0.0	0.0		0.0		30.0
Hujan Maks	23.0	50.0	67.0	32.0	22.0	39.0	27.0	17.0	18.0	73.0	83.0	46.0
Jml. Curah Hujan	103.0	213.0	287.0	118.0	118.0	190.0	66.0	31.0	44.0	237.0	371.0	375.0
Jml. Hari Hujan	10	15	18	10	12	13	3	3	4	15	16	18
Jml. data (1-15)	15	15	15	15	15	15	15	15	15	15	15	15
Jml. Hujan (1-15)	59.0	107.0	173.0	59.0	44.0	82.0	66.0	18.0	2.0	169.0	181.0	78.0
Jml. Data (16-31)	16	13	16	15	16	15	16	16	15	16	15	16
Jml. Hujan (16-31)	44.0	106.0	114.0	59.0	74.0	108.0	0.0	13.0	42.0	68.0	190.0	297.0
Tahunan	Hujan Maksimum			Jumlah Curah Hujan			Jumlah Hari Hujan			Hujan Ekstrim		
	83.0			2153.0			137			102		

GRAFIK HUJAN (mm)

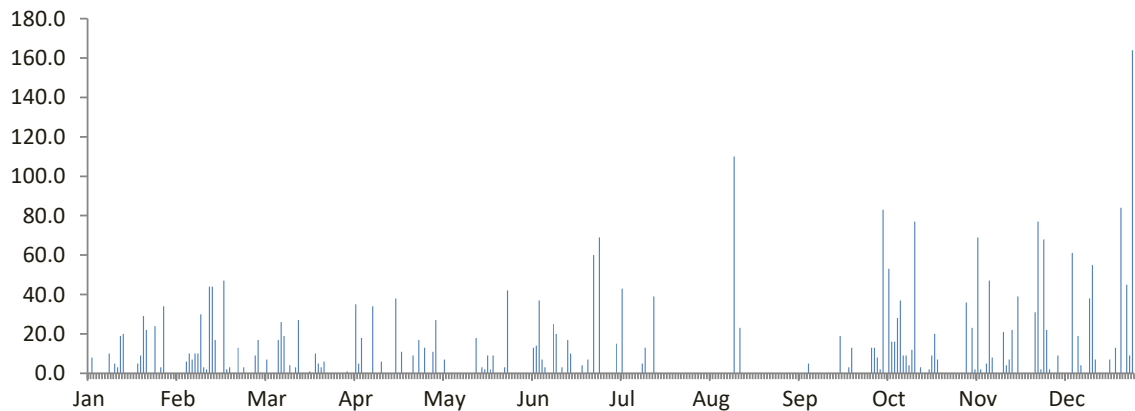


DATA CURAH HUJAN HARIAN

Nama Pos : Prawoto	Provinsi : Jawa Tengah
Nomor Pos : RW 23	Kota/Kabupaten : Pati
Jenis Alat : Manual	Kecamatan : Sukolilo
Koordinat : 6 57' 35" LS-110 49' 45" BT	Desa/Kampung : Prawoto
Elevasi : + 10 m	Pengelola : BBWS Pemali Juana
SWS - DAS : Seluna - Juana	Didirikan : -
Tahun Pendirian : 2007	Tahun : 2022

TANGGAL	BULAN (mm)											
	Jan	Feb	Mar	Apr	Mei	Jun	Jul	Ags	Sep	Okt	Nov	Des
1	0.0	0.0	17.0	1.0	11.0	0.0	0.0	0.0	0.0	13.0	0.0	22.0
2	8.0	0.0	0.0	0.0	27.0	0.0	0.0	0.0	0.0	13.0	0.0	2.0
3	0.0	0.0	0.0	0.0	0.0	0.0	0.0	0.0	0.0	8.0	36.0	0.0
4	0.0	6.0	7.0	35.0	0.0	0.0	15.0	0.0	0.0	2.0	0.0	0.0
5	0.0	10.0	0.0	5.0	7.0	13.0	0.0	0.0	0.0	83.0	23.0	9.0
6	0.0	7.0	0.0	18.0	0.0	14.0	43.0	0.0	0.0	0.0	2.0	0.0
7	0.0	10.0	0.0	0.0	0.0	37.0	0.0	0.0	0.0	53.0	69.0	0.0
8	10.0	10.0	17.0	0.0	0.0	7.0	0.0	0.0	0.0	16.0	2.0	0.0
9	0.0	30.0	26.0	0.0	0.0	3.0	0.0	0.0	5.0	16.0	0.0	0.0
10	5.0	3.0	19.0	34.0	0.0	0.0	0.0	0.0	0.0	28.0	5.0	61.0
11	3.0	2.0	0.0	0.0	0.0	0.0	0.0	0.0	0.0	37.0	47.0	0.0
12	19.0	44.0	4.0	0.0	0.0	25.0	0.0	0.0	0.0	9.0	8.0	19.0
13	20.0	44.0	0.0	6.0	0.0	20.0	5.0	0.0	0.0	9.0	0.0	4.0
14	0.0	17.0	3.0	0.0	0.0	0.0	13.0	110.0	0.0	4.0	0.0	0.0
15	0.0	0.0	27.0	0.0	0.0	3.0	0.0	0.0	0.0	12.0	0.0	0.0
16	0.0	0.0	0.0	0.0	18.0	0.0	0.0	23.0	0.0	77.0	21.0	38.0
17	0.0	47.0	0.0	0.0	0.0	17.0	39.0	0.0	0.0	0.0	4.0	55.0
18	5.0	2.0	0.0	38.0	3.0	10.0	0.0	0.0	0.0	3.0	7.0	7.0
19	9.0	3.0	1.0	0.0	2.0	0.0	0.0	0.0	0.0	0.0	22.0	0.0
20	29.0	0.0	0.0	11.0	9.0	0.0	0.0	0.0	19.0	0.0	0.0	0.0
21	22.0	0.0	10.0	0.0	2.0	0.0	0.0	0.0	0.0	2.0	39.0	0.0
22	0.0	13.0	5.0	0.0	9.0	4.0	0.0	0.0	0.0	9.0	0.0	0.0
23	0.0	0.0	3.0	0.0	0.0	0.0	0.0	0.0	3.0	20.0	0.0	7.0
24	24.0	3.0	6.0	9.0	0.0	7.0	0.0	0.0	13.0	7.0	0.0	0.0
25	0.0	0.0	0.0	0.0	0.0	0.0	0.0	0.0	0.0	0.0	0.0	13.0
26	3.0	0.0	0.0	17.0	3.0	60.0	0.0	0.0	0.0	0.0	0.0	0.0
27	34.0	0.0	0.0	0.0	42.0	0.0	0.0	0.0	0.0	0.0	31.0	84.0
28	0.0	9.0	0.0	13.0	0.0	69.0	0.0	0.0	0.0	0.0	77.0	0.0
29	0.0		0.0	0.0	0.0	0.0	0.0	0.0	0.0	0.0	2.0	45.0
30	0.0		0.0	0.0	0.0	0.0	0.0	0.0	0.0	0.0	68.0	9.0
31	0.0		0.0		0.0		0.0	0.0		0.0		164.0
Hujan Maks	34.0	47.0	27.0	38.0	42.0	69.0	43.0	110.0	19.0	83.0	77.0	164.0
Jml. Curah Hujan	191.0	260.0	145.0	187.0	133.0	289.0	115.0	133.0	40.0	421.0	463.0	539.0
Jml. Hari Hujan	13	17	13	11	11	14	5	2	4	20	17	15
Jml. data (1-15)	15	15	15	15	15	15	15	15	15	15	15	15
Jml. Hujan (1-15)	65.0	183.0	120.0	99.0	45.0	122.0	76.0	110.0	5.0	303.0	192.0	117.0
Jml. Data (16-31)	16	13	16	15	16	15	16	16	15	16	15	16
Jml. Hujan (16-31)	126.0	77.0	25.0	88.0	88.0	167.0	39.0	23.0	35.0	118.0	271.0	422.0
Tahunan	Hujan Maksimum		Jumlah Curah Hujan				Jumlah Hari Hujan			Hujan Ekstrim		
	164.0		2916.0				142			164		

GRAFIK HUJAN (mm)

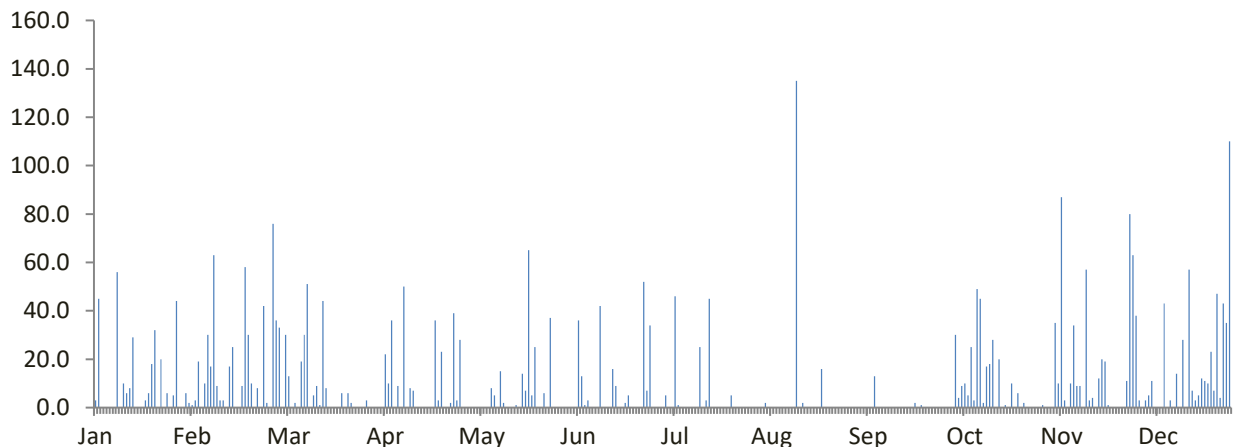


DATA CURAH HUJAN HARIAN

Nama Pos	: Dongan Kedumulyo	Provinsi	: Jawa Tengah
Nomor Pos	: 624	Kota/Kabupaten	: Pati
Jenis Alat	: Manual	Kecamatan	: Sukolilo
Koordinat	: 6 55' 31.1" LS-110 57' 31.6" BT	Desa/Kampung	: Kedumulyo
Elevasi	: -	Pengelola	: BAPUSDATARU Seluna
SWS - DAS	: -	Didirikan	: -
Tahun Pendirian	: -	Tahun	: 2022

TANGGAL	BULAN (mm)											
	Jan	Feb	Mar	Apr	Mei	Jun	Jul	Ags	Sep	Okt	Nov	Des
1	3.0	1.0	33.0	0.0	0.0	0.0	0.0	0.0	0.0	0.0	1.0	38.0
2	45.0	3.0	0.0	0.0	0.0	0.0	0.0	0.0	0.0	0.0	0.0	3.0
3	0.0	19.0	30.0	0.0	0.0	0.0	5.0	0.0	0.0	0.0	0.0	0.0
4	0.0	0.0	13.0	22.0	0.0	0.0	0.0	2.0	0.0	30.0	0.0	3.0
5	0.0	10.0	0.0	10.0	0.0	36.0	0.0	0.0	0.0	4.0	35.0	5.0
6	0.0	30.0	2.0	36.0	0.0	13.0	46.0	0.0	0.0	9.0	10.0	11.0
7	0.0	17.0	0.0	0.0	0.0	1.0	1.0	0.0	0.0	10.0	87.0	0.0
8	56.0	63.0	19.0	9.0	8.0	3.0	0.0	0.0	13.0	5.0	3.0	0.0
9	0.0	9.0	30.0	0.0	5.0	0.0	0.0	0.0	0.0	25.0	0.0	0.0
10	10.0	3.0	51.0	50.0	0.0	0.0	0.0	0.0	0.0	3.0	10.0	43.0
11	6.0	3.0	0.0	0.0	15.0	0.0	0.0	0.0	0.0	49.0	34.0	0.0
12	8.0	0.0	5.0	8.0	2.0	42.0	0.0	0.0	0.0	45.0	9.0	3.0
13	29.0	17.0	9.0	7.0	0.0	0.0	0.0	0.0	0.0	2.0	9.0	0.0
14	0.0	25.0	1.0	0.0	0.0	0.0	25.0	135.0	0.0	17.0	0.0	14.0
15	0.0	0.0	44.0	0.0	0.0	0.0	0.0	0.0	0.0	18.0	57.0	0.0
16	0.0	0.0	8.0	0.0	1.0	16.0	3.0	2.0	0.0	28.0	3.0	28.0
17	3.0	9.0	0.0	0.0	0.0	9.0	45.0	0.0	0.0	0.0	4.0	0.0
18	6.0	58.0	0.0	0.0	14.0	0.0	0.0	0.0	0.0	20.0	0.0	57.0
19	18.0	30.0	0.0	0.0	7.0	0.0	0.0	0.0	0.0	0.0	12.0	7.0
20	32.0	10.0	0.0	36.0	65.0	2.0	0.0	0.0	0.0	1.0	20.0	3.0
21	0.0	0.0	6.0	3.0	5.0	5.0	0.0	0.0	2.0	0.0	19.0	5.0
22	20.0	8.0	0.0	23.0	25.0	0.0	0.0	16.0	0.0	10.0	1.0	12.0
23	0.0	0.0	6.0	0.0	0.0	0.0	0.0	0.0	1.0	0.0	0.0	11.0
24	6.0	42.0	2.0	0.0	0.0	0.0	5.0	0.0	0.0	6.0	0.0	10.0
25	0.0	2.0	0.0	2.0	6.0	0.0	0.0	0.0	0.0	0.0	0.0	23.0
26	5.0	0.0	0.0	39.0	0.0	52.0	0.0	0.0	0.0	2.0	0.0	7.0
27	44.0	76.0	0.0	3.0	37.0	7.0	0.0	0.0	0.0	0.0	0.0	47.0
28	0.0	36.0	0.0	28.0	0.0	34.0	0.0	0.0	0.0	0.0	11.0	4.0
29	0.0		3.0	0.0	0.0	0.0	0.0	0.0	0.0	0.0	80.0	43.0
30	6.0		0.0	0.0	0.0	0.0	0.0	0.0	0.0	0.0	63.0	35.0
31	2.0		0.0		0.0		0.0	0.0		0.0		110.0
Hujan Maks	56.0	76.0	51.0	50.0	65.0	52.0	46.0	135.0	13.0	49.0	87.0	110.0
Jml. Curah Hujan	299.0	471.0	262.0	276.0	190.0	220.0	130.0	155.0	16.0	284.0	468.0	522.0
Jml. Hari Hujan	17	21	16	14	12	12	7	4	3	18	19	23
Jml. data (1-15)	15	15	15	15	15	15	15	15	15	15	15	15
Jml. Hujan (1-15)	157.0	200.0	237.0	142.0	30.0	95.0	77.0	137.0	13.0	217.0	255.0	120.0
Jml. Data (16-31)	16	13	16	15	16	15	16	16	15	16	15	16
Jml. Hujan (16-31)	142.0	271.0	25.0	134.0	160.0	125.0	53.0	18.0	3.0	67.0	213.0	402.0
Tahunan	Hujan Maksimum			Jumlah Curah Hujan			Jumlah Hari Hujan			Hujan Ekstrim		
	135.0			3293.0			166			135		

GRAFIK HUJAN (mm)

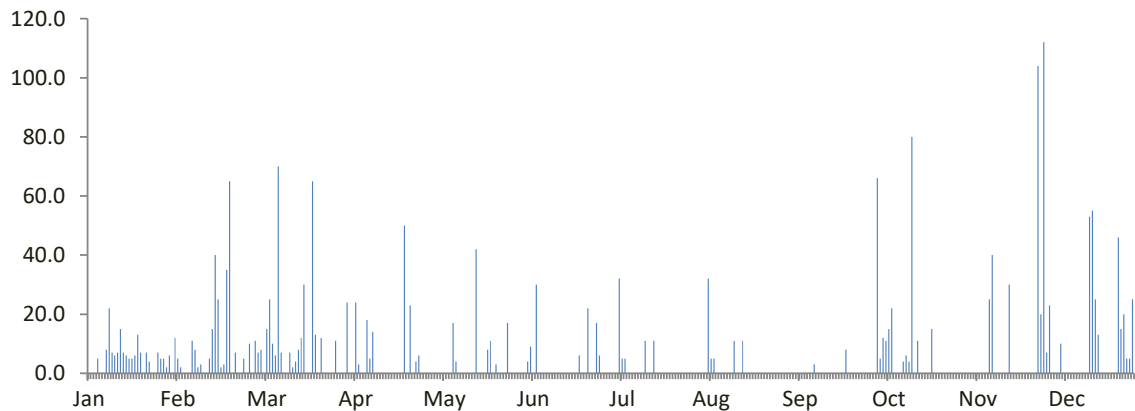


DATA CURAH HUJAN HARIAN

Nama Pos : Randugunting	Provinsi : Jawa Tengah
Nomor Pos : 0	Kota/Kabupaten : Pati
Jenis Alat : Manual	Kecamatan : Batangan
Koordinat : -6 45' 5.1" LS-111 13' 58" BT	Desa/Kampung : Kuniran
Elevasi : -	Pengelola : -
SWS - DAS : K Lusi	Didirikan : -
Tahun Pendirian : -	Tahun : 2022

TANGGAL	BULAN (mm)											
	Jan	Feb	Mar	Apr	Mei	Jun	Jul	Ags	Sep	Okt	Nov	Des
1	0.0	5.0	7.0	24.0	0.0	0.0	0.0	0.0	0.0	0.0	0.0	7.0
2	0.0	2.0	8.0	0.0	0.0	0.0	0.0	0.0	0.0	0.0	0.0	23.0
3	0.0	0.0	0.0	0.0	0.0	4.0	0.0	0.0	0.0	66.0	0.0	0.0
4	5.0	0.0	15.0	24.0	0.0	9.0	0.0	0.0	0.0	5.0	0.0	0.0
5	0.0	0.0	25.0	3.0	0.0	0.0	32.0	32.0	0.0	12.0	0.0	0.0
6	0.0	11.0	10.0	0.0	0.0	30.0	5.0	5.0	0.0	11.0	0.0	10.0
7	8.0	8.0	6.0	0.0	0.0	0.0	5.0	5.0	0.0	15.0	0.0	0.0
8	22.0	2.0	70.0	18.0	17.0	0.0	0.0	0.0	0.0	22.0	0.0	0.0
9	7.0	3.0	7.0	5.0	4.0	0.0	0.0	0.0	0.0	0.0	0.0	0.0
10	6.0	0.0	0.0	14.0	0.0	0.0	0.0	0.0	0.0	0.0	0.0	0.0
11	7.0	0.0	0.0	0.0	0.0	0.0	0.0	0.0	3.0	0.0	25.0	0.0
12	15.0	5.0	7.0	0.0	0.0	0.0	0.0	0.0	0.0	4.0	40.0	0.0
13	7.0	15.0	2.0	0.0	0.0	0.0	0.0	0.0	0.0	6.0	0.0	0.0
14	6.0	40.0	4.0	0.0	0.0	0.0	11.0	11.0	0.0	4.0	0.0	0.0
15	5.0	25.0	8.0	0.0	0.0	0.0	0.0	0.0	0.0	80.0	0.0	0.0
16	5.0	2.0	12.0	0.0	42.0	0.0	0.0	0.0	0.0	0.0	0.0	53.0
17	6.0	3.0	30.0	0.0	0.0	0.0	11.0	11.0	0.0	11.0	0.0	55.0
18	13.0	35.0	0.0	0.0	0.0	0.0	0.0	0.0	0.0	0.0	30.0	25.0
19	7.0	65.0	0.0	0.0	0.0	0.0	0.0	0.0	0.0	0.0	0.0	13.0
20	0.0	0.0	65.0	0.0	8.0	0.0	0.0	0.0	0.0	0.0	0.0	0.0
21	7.0	7.0	13.0	50.0	11.0	6.0	0.0	0.0	0.0	0.0	0.0	0.0
22	4.0	0.0	0.0	0.0	0.0	0.0	0.0	0.0	8.0	15.0	0.0	0.0
23	0.0	0.0	12.0	23.0	3.0	0.0	0.0	0.0	0.0	0.0	0.0	0.0
24	0.0	5.0	0.0	0.0	0.0	22.0	0.0	0.0	0.0	0.0	0.0	0.0
25	7.0	0.0	0.0	4.0	0.0	0.0	0.0	0.0	0.0	0.0	0.0	0.0
26	5.0	10.0	0.0	6.0	0.0	0.0	0.0	0.0	0.0	0.0	0.0	46.0
27	5.0	0.0	0.0	0.0	17.0	17.0	0.0	0.0	0.0	0.0	0.0	15.0
28	2.0	11.0	11.0	0.0	0.0	6.0	0.0	0.0	0.0	0.0	104.0	20.0
29	6.0		0.0	0.0	0.0	0.0	0.0	0.0	0.0	0.0	20.0	5.0
30	0.0		0.0	0.0	0.0	0.0	0.0	0.0	0.0	0.0	112.0	5.0
31	12.0		0.0		0.0		0.0	0.0		0.0		25.0
Hujan Maks	22.0	65.0	70.0	50.0	42.0	30.0	32.0	32.0	8.0	80.0	112.0	55.0
Jml. Curah Hujan	167.0	254.0	312.0	171.0	102.0	94.0	64.0	64.0	11.0	251.0	331.0	302.0
Jml. Hari Hujan	22	18	18	10	7	7	5	5	2	12	6	13
Jml. data (1-15)	15	15	15	15	15	15	15	15	15	15	15	15
Jml. Hujan (1-15)	88.0	116.0	169.0	88.0	21.0	43.0	53.0	53.0	3.0	225.0	65.0	40.0
Jml. Data (16-31)	16	13	16	15	16	15	16	16	15	16	15	16
Jml. Hujan (16-31)	79.0	138.0	143.0	83.0	81.0	51.0	11.0	11.0	8.0	26.0	266.0	262.0
Tahunan	Hujan Maksimum			Jumlah Curah Hujan			Jumlah Hari Hujan			Hujan Ekstrim		
	112.0			2123.0			125			112		

GRAFIK HUJAN (mm)



DATA CURAH HUJAN HARIAN

Nama Pos : Sangkrah	Provinsi : Jawa Tengah
Nomor Pos : R 015	Kota/Kabupaten : Rembang
Jenis Alat : Manual	Kecamatan : Sumber
Koordinat : ' ' LS- ' ' BT	Desa/Kampung : Logede
Elevasi : -	Pengelola : BAPUSDATARU Seluna
SWS - DAS : Sulang	Didirikan : -
Tahun Pendirian : -	Tahun : 2022

TANGGAL	BULAN (mm)											
	Jan	Feb	Mar	Apr	Mei	Jun	Jul	Ags	Sep	Okt	Nov	Des
1	0.0	0.0	38.0	27.0	0.0	0.0	0.0	0.0	0.0	0.0	13.0	17.0
2	0.0	0.0	0.0	0.0	0.0	0.0	0.0	0.0	0.0	35.0	21.0	27.0
3	0.0	0.0	16.0	4.0	0.0	2.5	0.0	0.0	7.5	20.5	7.0	0.0
4	0.0	0.0	32.0	17.0	0.0	7.0	7.5	0.0	3.0	11.0	3.0	0.0
5	0.0	3.0	41.0	22.0	0.0	4.0	3.0	0.0	0.0	6.0	1.5	0.0
6	0.0	1.0	24.5	11.5	4.5	0.0	0.0	0.0	0.0	13.0	18.0	0.0
7	15.0	35.5	23.0	0.0	5.5	0.0	0.0	0.0	0.0	23.0	0.0	0.0
8	21.0	13.0	11.5	7.0	21.5	0.0	0.0	0.0	0.0	5.0	23.0	0.0
9	7.5	21.0	3.0	0.0	32.0	0.0	0.0	17.0	8.5	0.0	17.0	0.0
10	31.0	6.5	15.0	3.0	13.0	0.0	0.0	13.0	1.0	19.0	9.5	0.0
11	4.5	0.0	28.0	14.0	8.0	6.5	0.0	0.0	0.0	27.0	6.5	0.0
12	1.0	0.0	7.0	5.0	0.0	21.0	0.0	0.0	0.0	13.5	0.0	0.0
13	0.0	0.0	0.0	0.0	0.0	1.5	36.0	0.0	0.0	4.5	0.0	0.0
14	0.0	0.0	12.0	0.0	0.0	0.0	18.0	0.0	0.0	31.0	0.0	11.0
15	0.0	0.0	0.0	0.0	0.0	0.0	11.5	0.0	0.0	12.0	0.0	22.0
16	0.0	0.0	29.0	0.0	0.0	0.0	0.0	0.0	0.0	3.0	3.0	21.0
17	0.0	0.0	0.0	0.0	23.5	23.0	0.0	0.0	28.5	12.0	0.0	11.0
18	0.0	0.0	0.0	0.0	21.0	12.5	0.0	0.0	4.0	33.0	0.0	3.0
19	9.0	0.0	31.0	11.5	7.5	3.0	0.0	0.0	0.0	21.0	0.0	9.0
20	0.0	0.0	19.5	8.0	0.0	1.0	0.0	0.0	0.0	8.0	31.0	3.5
21	0.0	11.0	11.0	0.0	0.0	0.0	0.0	0.0	0.0	4.5	21.0	8.0
22	35.0	31.5	0.0	2.5	0.0	0.0	0.0	0.0	21.5	23.0	12.0	13.0
23	11.0	21.0	4.5	6.0	0.0	0.0	0.0	0.0	19.0	4.5	34.0	18.0
24	23.0	5.0	16.0	0.0	0.0	0.0	0.0	0.0	30.5	1.0	19.0	12.0
25	2.5	36.0	21.0	3.5	1.0	0.0	0.0	0.0	7.0	0.0	11.0	6.0
26	0.0	13.0	14.0	0.0	12.0	0.0	9.5	11.5	0.0	0.0	5.0	13.0
27	0.0	0.0	0.0	0.0	2.0	0.0	3.0	3.0	0.0	0.0	20.0	7.0
28	0.0	0.0	31.0	0.0	0.0	0.0	0.0	0.0	0.0	0.0	13.0	15.0
29	0.0		8.5	0.0	0.0	0.0	0.0	0.0	0.0	0.0	3.0	0.0
30	0.0		19.0	24.5	0.0	0.0	0.0	0.0	0.0	0.0	1.0	0.0
31	0.0		22.0		0.0		0.0	0.0		0.0		0.0
Hujan Maks	35.0	36.0	41.0	27.0	32.0	23.0	36.0	17.0	30.5	35.0	34.0	27.0
Jml. Curah Hujan	160.5	197.5	477.5	166.5	151.5	82.0	88.5	44.5	130.5	330.5	292.5	216.5
Jml. Hari Hujan	11	12	24	15	12	10	7	4	10	22	22	17
Jml. data (1-15)	15	15	15	15	15	15	15	15	15	15	15	15
Jml. Hujan (1-15)	80.0	80.0	251.0	110.5	84.5	42.5	76.0	30.0	20.0	220.5	119.5	77.0
Jml. Data (16-31)	16	13	16	15	16	15	16	16	15	16	15	16
Jml. Hujan (16-31)	80.5	117.5	226.5	56.0	67.0	39.5	12.5	14.5	110.5	110.0	173.0	139.5
Tahunan	Hujan Maksimum		Jumlah Curah Hujan			Jumlah Hari Hujan			Hujan Ekstrim			
	41.0		2338.5			166			82			

GRAFIK HUJAN (mm)

